

NORTH BEND PARKS COMMISSION MEETING

August 23, 2023, 6:30pm

North Bend City Hall

920 SE Cedar Falls Way, North Bend, WA

PLEASE NOTE: This meeting will be held in-person at City Hall.

A Zoom meeting link may be set up, upon request, should a member of the public or Parks Commission wish to attend remotely. Contact Principal Planner Mike McCarty at mmccarty@northbendwa.gov to request a Zoom link to attend the meeting remotely.

AGENDA:

1. Call to order, opportunity for public comments
1. Youth Parks Commissioner Transition
 - a. Thank you outgoing Youth Parks Commissioner Paige Robbins and best wishes for University!
 - b. Welcome new Youth Parks Commissioner Kaylie McGhee
2. Minutes of June 28, 2023 Parks Commission meeting
3. Parks Commission review and recommendation – Conceptual Park Plans for William H. Taylor Park and Riverfront Park
 - a. Summary of site analysis and alternatives development by Site Workshop for each park
 - b. Parks Commission discussion and recommendations
4. Garbage/Recycling Cans within the Downtown Area
 - a. Background/purpose for replacements/additions
 - b. Determine locations
 - c. Determine can types
 - d. Parks Commission discussion and recommendation for Decision Card for Council for 2024 budget

Agenda sent to: Parks Commissioners, Mayor, City Administrator, City Clerk, CED Director, Senior Planner, Public Works Parks Lead

Minutes of the North Bend Parks Commission Meeting of June 28, 2023
Minutes are draft until approved at the following Parks Commission Meeting

The meeting, held in person at North Bend City Hall, was called to order at 6:34 p.m.

Attendance:

- Parks Commissioners in attendance: Minna Rudd, Tim Talevich, Kyle Braun, Eric Thompson, Brian Duncan and Paige Robbins
- Parks Commissioners absent: Mark Correia
- Staff in attendance: Principal Planner Mike McCarty
- Others in attendance: Terry Pottmeyer, resident

Minutes of the May 24, 2023 Parks Commission Meeting

Commissioner Braun made a motion to approve the minutes as amended. Commissioner Duncan seconded. The motion passed unanimously.

Arbor Day Proposal for EJ Roberts Park

Resident Terry Pottmeyer outlined a proposal for “Oaktoberfest” at EJ Roberts Park, featuring displays, booths, games and more on the theme of oak trees and other native plants that are critical to our environment. She also proposed the creation of a tree fund to lend philanthropic support to tree planting and care in the community.

Mike McCarty responded that the city celebrates Arbor Day, and perhaps this event could be tied to that day. Terry reported she has volunteers lined up to help. Commission members suggested that other possible support could include the Mount Si HS Green Team; Mountains to Sound; and Si View Parks.

Mike said he would confirm with the mayor to check availability and other matters.

Senior Center Survey Results

Responding to an email from Susan Kingsbury-Comeau of the Mount Si Senior Center, relating to the gazebo at the senior center, Commission members raised concern about the feasibility of restoring the existing gazebo. It’s in disrepair, does not meet ADA requirements and would potentially be expensive to repair. It was suggested that a picnic area there might be more feasible; the Mount Si HS Woodworking Club potentially could help build a picnic area, possibly using existing wood from the gazebo.

Update on Park Planning for William H. Taylor and Riverfront Parks

Mike McCarty reported that the workshop on planning for these parks was well attended, with lots of good ideas suggested by the public for both parks. Those ideas will be presented to the City Council on July 25; the Parks Commission will review council feedback on Aug. 23 for a recommendation to the council.

Garbage Cans in the Downtown Area

The city has a new garbage service provider, so we need a new garbage can standard. That includes:

- A design that makes it clear what is recycle, and what is garbage.
- Enough cans downtown, but not too many
- Place recycle and garbage cans together
- Consider attractive graphic elements on them, such as Mount Si or the North Bend city logo.

Parks Commissioners requested more information on location for the cans. Mike will bring more information on this topic for review to the next Commission meeting.

Part 2 Annual Park Tour

The Commission visited Torguson Park, Dahlgren Family Park and Tollgate Farm Park. Ideas were exchanged about the current conditions at these parks and future improvements. Those include:

Torguson: Finish the center plaza makeover with perhaps an interactive map on the concrete pointing out local landmarks; improve the transition from the parking area to the central area, and from the central area to the play equipment; create a drop-off zone in the parking lot; make the play area more inclusive; and rubberize the play area surface. At the pump track area, it was suggested that a picnic table in the grassy area across the path from the track might be nice.

Dahlgren: Mike reported that plans for the parking area at the east end of the property are moving forward.

Tollgate: Local farmers have become tenants and the farm is becoming the community center envisioned. Discussion also focused on a playfield and picnic shelter there.

Next Meeting

The Commission will meet next on Aug. 23, 2023.

Adjournment

The meeting was adjourned at 9:10 p.m.

Minutes prepared by Tim Talevich



DATE: August 11, 2023

TO: Parks Commission – For August 23, 2023 Parks Commission Meeting

FROM: Mike McCarty, Principal Planner

SUBJECT: Parks Commission Review and Recommendations - Riverfront Park and William H. Taylor Park

Site Workshop, a landscape architecture and urban design consultant retained by the City, has been working with the City to prepare design plans for William H. Taylor Park and Riverfront Park, authorized by a decision card the City Council approved in the 2021-2022 biennial budget for such purposes.

In addition to conducting survey work and background research for each park, Site Workshop and the City have engaged significant public input in the development of the conceptual park plans. Meetings and public and agency input opportunities to-date in 2023 have included:

- January 9 – Parks Commission meeting and public workshop at WH Taylor Depot to solicit input to what should go into the plans
- January 11 - Public workshop at City Hall to solicit input to what should go into the plans
- February 16 - Kiwanis/Rotary engagement meeting
- March 3 - Stakeholder meeting with Snoqualmie Tribal members
- March 7 - Stakeholder meeting with NB neighbors of Riverfront Park
- April 25 – Briefing to the City Council on initial design ideas
- May 23 - Briefing to the City Council on alternative conceptual designs for both parks
- June 13 – Public workshop at City Hall to solicit input on alternative design concept ideas for both parks
- Month of June - Public survey hosted on the City's website for additional public input on the design concept ideas
- July 12 – Consultation meeting with King Co. Dept. of Natural Resources and Parks – Rivers Section on Riverfront Park levy and shoreline access issues
- July 25 – Council Workstudy on alternative concept plans for each park

Through this process and public input, Site Workshop has now refined the design concepts into a final conceptual park plan for each park. Staff are now seeking Parks Commission review and recommendation on each final conceptual park plan.

At your August 23 meeting, Site Workshop will present to the Parks Commission on the input that went into the final conceptual park plan for each park and describe key features and rationale for those features. The Parks Commission will be asked to review and make recommendations on any final adjustments to the layout and content of the features in each plan. The Parks Commission's recommendation will then go to the City Council for adoption of the Park Plans, which will then guide future grant applications and preparation of civil plans for constructing the park improvements.

We look forward to your review and recommendation.

DATE: August 14, 2023

TO: Parks Commission – For August 23, 2023 Parks Commission Meeting

FROM: Site Workshop

SUBJECT: Parks Commission Review and Recommendations - Riverfront Park and William H. Taylor Park

Overview

Site Workshop has engaged the North Bend public, City staff, the City Council, and the Snoqualmie Tribe throughout the design process for WH Taylor Park and Riverfront Park. The master plan designs are a direct outcome of that engagement. Below is a summary of the feedback we've received and the resulting design strategies it has shaped. See accompanying master plan drawings for more information.

General Engagement Feedback (both parks)

1. Find site-specific ways to represent the history of the Snoqualmie Tribe, their people, culture, and creation story.
2. Study wayfinding and circulation strategies to link the parks to the greater trail networks, open spaces, and parking lots.
3. Improve pedestrian safety, especially at intersections.

WH Taylor Master Plan Process

Engagement Feedback

1. Capitalize on the site's history and character to create an iconic city center park.
2. Strengthen the visual and street experience along Ballarat Ave S to connect the park with.
3. Improve pedestrian safety and accessibility to and within the park.
4. Create better opportunities for gathering and play.
5. Consider options to reconfigure and consolidate the train tracks and parking along McClellan, without reducing the number of parking spaces.
6. Explore options for renovating, relocating, or replacing the train depot building.
7. Improve the multi-use trail for better safety and better access for pedestrians and cyclists.

Syntheses and Design

Design studies were developed for WH Taylor Park, Ballarat Ave S and E McClellan St These studies included:

- Property diagrams showing opportunities for various acquisitions or boundary line adjustments.
- Design options for E McClellan St & Ballarat Ave S illustrating parking, trail, track alignment, and fire lane layout.
- Concept site plans developed for WH Taylor Park, with alternative approaches to the train depot building.
 - Option 1 : INTERCHANGE - Renovate the existing depot.
 - Option 2 : ALLUVIAL – Reduce and renovate existing depot.
 - Option 3 : CONFLUENCE and Option 4: CONCOURSE – Build a new depot.

From these WH Taylor Park design options, the most desired features from the public survey include:

1. Flexible lawn or plaza space
2. Covered outdoor seating
3. Splash pad/ Water play
4. Holiday tree
5. Native plants

Preferred Master Plan

Public feedback on these design studies was shared with City Council, which recommended the following for implementation in the Master Plan:

- Convert Ballarat Ave S to a pedestrian only street (maintaining fire/emergency access).
- Maintain the existing train depot building and renovate the interior to better meet user needs.
- Utilize concept Option 3: Confluence as a foundation for the final park Master Plan, with refinements based on public feedback. As shown in this concept option, include the potential for additional property acquisition to expand the park.
- Reconfigure E McClellan St as shown in McClellan Concept Option 1.

Riverfront Master Plan Process

Engagement Feedback

1. Limit impact, preserve, and rehabilitate the natural character of the park.
2. Strengthen the entry points and safe access to the park.
3. Provide clear wayfinding and interpretive signage.
4. Create a connected trail system with opportunities to pause and enjoy the seasonal beauty.
5. Improve access to the river.
6. Respect adjacent private properties.

Synthesis and Design

Design studies for River Front Park and Bendigo Blvd S.

- Diagrams showing critical areas boundaries (wetlands, ordinary high water, buffers, etc)
- Studies showing adjacent/future opportunities.
- Concept site plans developed for River Front Park and Bendigo Blvd S, with precedents.
 - Option 1 : HISTORY FOCUS – Celebrate the history of the site.
 - Option2 : NATURE FOCUS – Enhance/interpret the natural features of the site.

From these Riverfront Park design options the most desired features from the public survey include:

1. Nature Trails
2. Trail access to river shoreline
3. River viewing areas
4. Raised Boardwalk
5. Invasive plant removal and native plant restoration

Preferred Master Plan

Public feedback on these design studies was shared with City Council, which recommended the following for implementation in the Master Plan:

- Removed the loop trail from the wetland buffer.
- Provide a trail up to the south and east side of the historic Taylor foundation but not inside it.
- Show a 20' wide land swap that only includes the corner of Bendigo Blvd and Park Street (reduced from early concepts).
- Do not propose signal or crossing changes at Bendigo Blvd and Park Street, but an artistic crosswalk would be worth considering.
- Propose a HAWK pedestrian activated red light signal for safer crossing at Bendigo Blvd and the levee trail
- Provide a trail down to the river bank with natural log seating.

END OF DOCUMENT

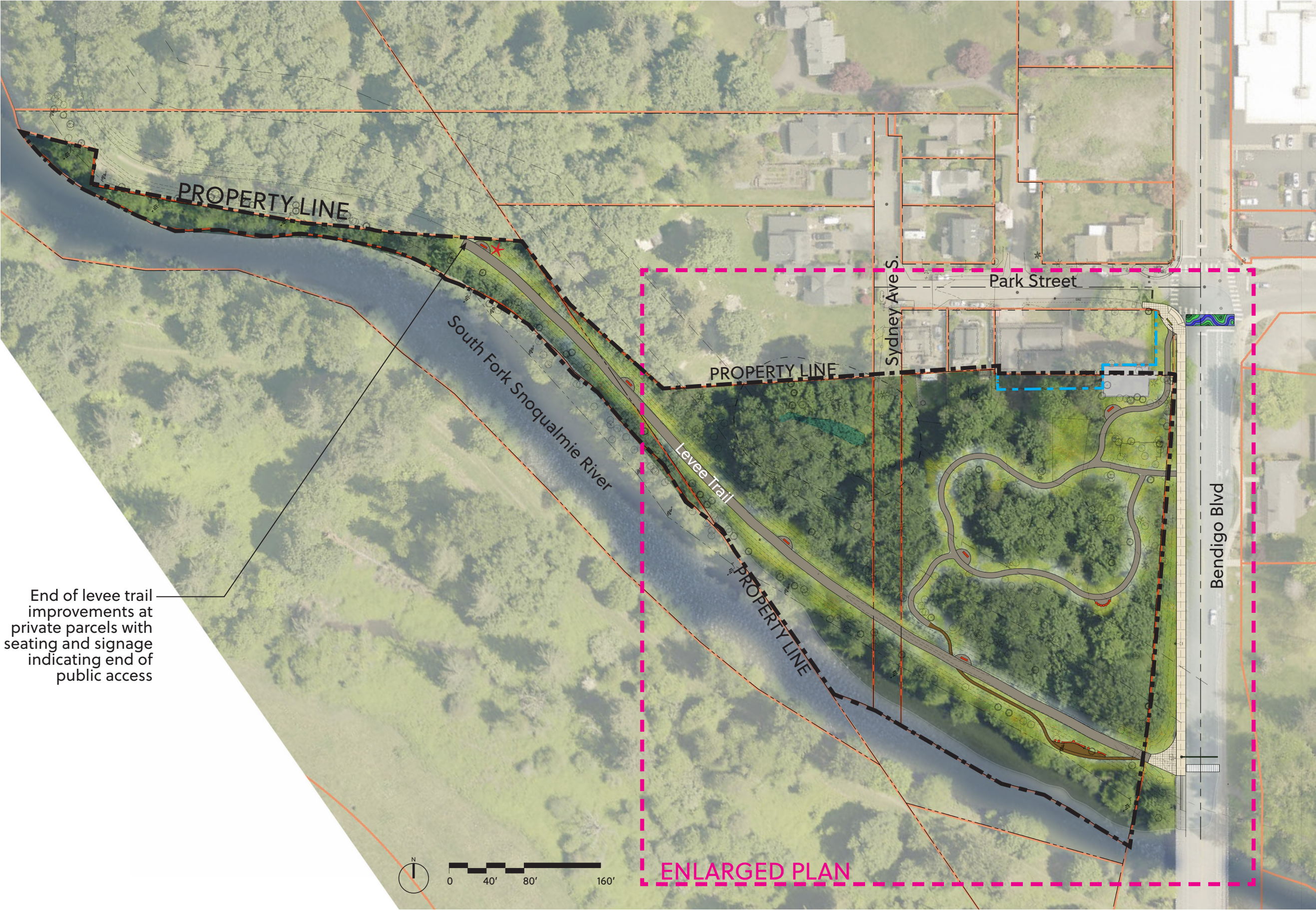
Preferred Master Plan - Overall



Preferred Master Plan - Enlargement Plan



Preferred Master Plan - Overall



Preferred Master Plan - Enlargement Plan



- LEGEND**
- Property line
 - Modified property line
 - Crushed rock surfacing
 - Wood chip surfacing
 - Concrete paving
 - Wayfinding sign
 - Interpretive sign
 - Natural / Wood seating

- Crosswalk art
- Park Entry Sign
- Possible property line adjustment with neighboring parcel
- Historic building foundation
- 6' wide crushed rock trail
- 10' wide multi-use trail
- Removal of invasive species and restoration of native vegetation
- 1/8 mile loop trail

- Resurface existing levee trail with new crushed rock surfacing
- Crosswalk with signalized HAWK pedestrian crossing system
- 3' trail down to riverbank and river viewing seating (logs and natural materials)



DATE: August 11, 2023

TO: Parks Commission – For August 23, 2023 Parks Commission Meeting

FROM: Mike McCarty, Principal Planner

SUBJECT: Parks Commission Recommendation – Downtown Waste Receptacles

The Mayor has requested that the Parks Commission consider the design and placement of public waste receptacles in the downtown area. This is based on the following factors:

1. The City has a new contract with Recology for municipal solid waste and recycling, which includes a provision that Recology will address collection of street-side public garbage and recycling from key public streets. (The City is responsible for providing the receptacles).
2. Some existing receptacles, particularly in the immediate downtown area along North Bend Way, are often overfilled, which can result in trash scattering onto sidewalks.
3. There is inconsistency with regard to the types of receptacles located through the downtown, making collection less uniform and more difficult.
4. Recology would prefer a “garage” style can that house toters that can be rolled out to and lifted by the garbage trucks, and a design with a solid lid rather than top holes, which result in water accumulation.
5. The downtown area has expanded over the last decade with new businesses (particularly food and beverage-related businesses) that generate additional pedestrian/sidewalk waste in areas where waste receptacles are not currently located, which can result in littering.

This topic was introduced at the June 28 Parks Commission meeting. Initial feedback from the Parks Commission at that meeting included the following:

1. Parks Commission recommended that recycling cans be included adjacent to/with all garbage cans.
2. Recycle receptacles should be very visually distinct from garbage receptacles and include a small hole to discourage trash placement within recycle cans.
3. Parks Commissioners requested to see a map of where existing receptacles are located.
4. Parks Commissioners liked the idea of a graphic element on the receptacles specific to North Bend’s context (such as images from North Bend and/or the City’s logo).

Attached is a map showing the location of the 10 existing trash receptacles in the downtown area. I have also attached a quote and images of the particular can style recommended by Recology, which is used by King County and the City of Seattle. The quote is based on 15 garbage and 15 recycling cans with custom graphics and anti-graffiti coating, and totals \$50,133 without tax.

For comparison, I have also attached other examples of dual trash/recycle receptacles from other manufacturers that are consistent with the Parks Commission’s initial feedback and Recology’s preferred design spec. These have the advantage of being one combined cabinet and have various color options, but don’t offer the custom graphics of the version suggested by Recology.



At your meeting, I am seeking your recommendation on locations for additional receptacles and selecting a preferred receptacle standard. The existing downtown receptacles can then be repurposed to other locations where needed such as at City Parks and trails. Your recommendation will then be provided in a Decision Card for consideration by the City Council for the 2024 Budget Cycle.

Thank you,
Mike

● Existing downtown public trash cans (10) King County iMap



King County, EagleView Technologies, Inc.

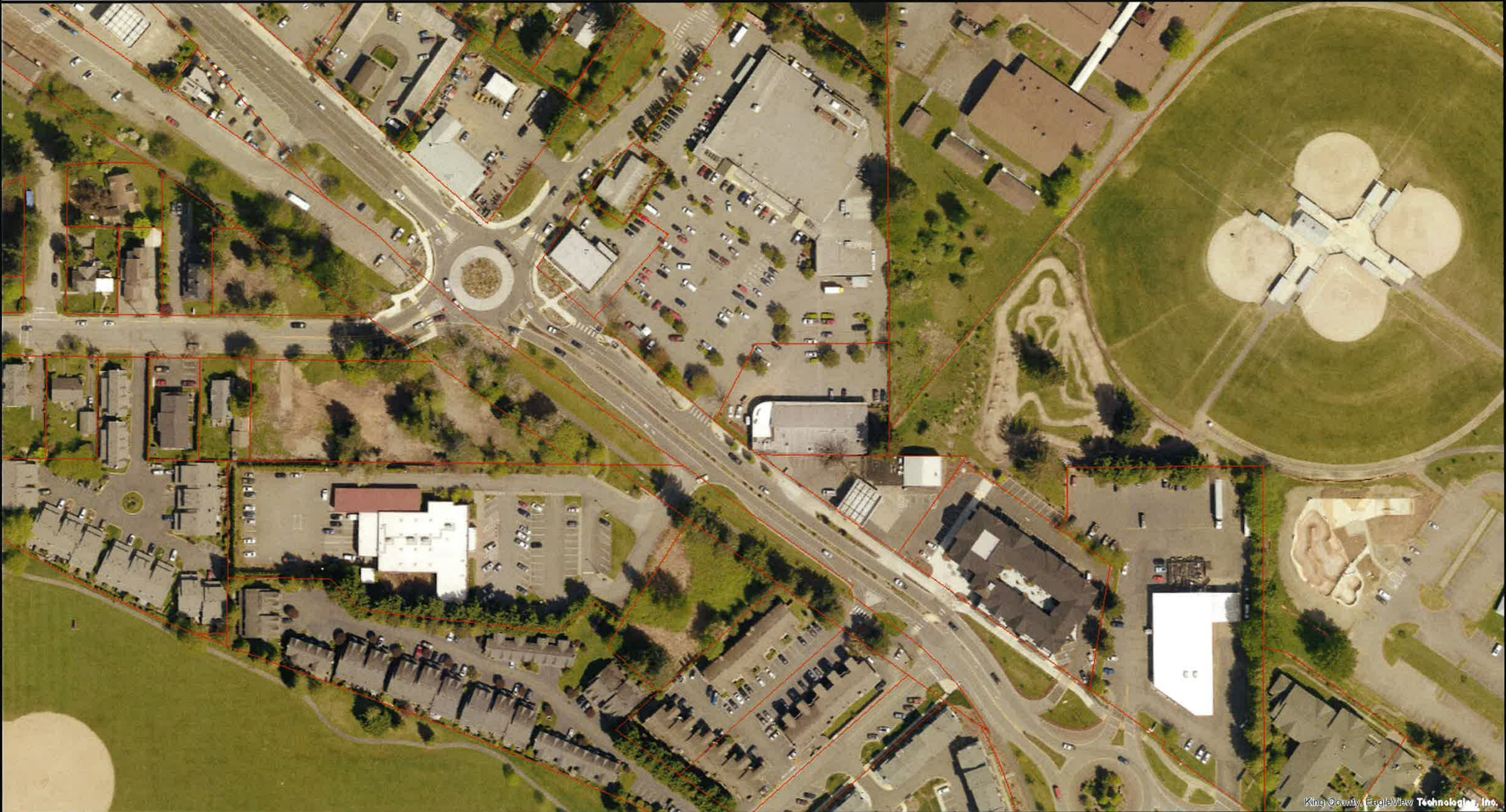
The information included on this map has been compiled by King County staff from a variety of sources and is subject to change without notice. King County makes no representations or warranties, express or implied, as to accuracy, completeness, timeliness, or rights to the use of such information. This document is not intended for use as a survey product. King County shall not be liable for any general, special, indirect, incidental, or consequential damages including, but not limited to, lost revenues or lost profits resulting from the use or misuse of the information contained on this map. Any sale of this map or information on this map is prohibited except by written permission of King County.

Date: 8/10/2023

Notes:



King County iMap



King County, EagleView Technologies, Inc.

The information included on this map has been compiled by King County staff from a variety of sources and is subject to change without notice. King County makes no representations or warranties, express or implied, as to accuracy, completeness, timeliness, or rights to the use of such information. This document is not intended for use as a survey product. King County shall not be liable for any general, special, indirect, incidental, or consequential damages including, but not limited to, lost revenues or lost profits resulting from the use or misuse of the information contained on this map. Any sale of this map or information on this map is prohibited except by written permission of King County.

Date: 8/10/2023

Notes:



Option 1.
w/ Quote



Equipment Proposal

Customer: City of North Bend WA
Attention: Mike McCarty
Ship To: North Bend, WA 98045

Date: Aug 7, 2023
Phone: 425-888-7649
Email: mmccarty@northbendwa.gov

Equipment Proposed	Model #	Color	Qty	Unit Price	Ext Price
35 GAL CART GARAGE, SOLID WITH NO SIDE PANELS - QTY 1-24 SOLID COLOR, INCLUDES 35 GAL POLY CART	CG35	Black	15	\$ 1,148.00	\$ 17,220.00
35 GAL CART GARAGE, SOLID WITH NO SIDE PANELS - QTY 1-24 SOLID COLOR, INCLUDES 35 GAL POLY CART	CG35	Sky Blue	15	\$ 1,148.00	\$ 17,220.00
ANTI-GRAFFITI COATING ON AREAS NOT COVERED BY GRAPHICS	Misc		30	\$ 80.00	\$ 2,400.00
CUSTOM GRAPHICS ON ALL FOUR SIDES AND TOP	Misc		30	\$ 377.00	\$ 11,310.00

Lift Gate Required: No

Equipment Total: \$ 48,150.00
Tax: \$ 0.00
Shipping/Handling: \$ 1,983.00
Total: \$50,133.00

Terms

Federal government terms are per GSA contract GS-07F-6004P.
State, County and Municipal government terms are Net 30 days.
Non-government orders under \$10,000 are payable by check or credit card prior to order acceptance.
Non-government orders over \$10,000 must be paid by check prior to order acceptance or, if paid by credit card will be subject to a 3% processing fee..
All orders FOB Ontario, California unless specified.
Lead time is approximately 45-90 days ARO **and will be confirmed at time of order.**
Quote is valid for 30 days with the exception of freight charges.

P.O. Box 1438 Guasti, CA 91743

Phone: (909) 605-0538

Fax: (909) 605-7780

Email: sales@securr.com







Option 2.



Shown with Single Stream and Full Opening



QUICK SPECS

Item #: N3-19201926DP2

Setting: Indoor/Outdoor

Material: Plastic Lumber

[View Full Specifications](#)

[SHARE this product](#)

QUESTIONS?

800.664.5340 or [Contact us](#)

Check-out now with Purchase Order or Credit Card



Combines style and durability

Fully customizable

Highest grade plastic lumber

[SUSTAINABILITY COLLECTION](#)

~~\$2,705.00~~

\$2,353.00

ADD TO QUOTE

ADD TO CART

CONFIGURE YOUR BIN CHOOSE OPTIONS

Panel Style

Smooth

Size

26 Gallon

Roof Color

Black

Trim Color

Black

Left Color

Blue

Left Opening

Single Stream



Left Symbol and Label

Recycle Only

Right Color

Black



The Manchester Collection

- Manufactured from pure high-grade of recycled HDPE, and unlike other plastic recycling centers, contains no foam fillers. Top-of-the-line pigments and UV inhibitors are used to maintain consistent in the most demanding outdoor environments. The product is virtually maintenance free and never needs painting, never splinters and never becomes food for termites. The units are constructed to last decades, and include pocket screw construction and marine grade hardware throughout.
- Serviced via a stainless steel piano hinged side door for ease of access, and all hinges are marine grade and thus rust resistant.
- Each unit comes with heavy duty liners with handles for easy servicing and lifting.
- Designed for both indoor and outdoor use, and meets all LEED requirements for recycled content, are ADA-compliant and fire safe.
- Our lumber lasts for decades and thanks to our full line of engineered products built with commercial-grade building techniques, the furnishings themselves last just as long.
- The lumber won't absorb moisture, which can lead to rotting and won't harbor insects. It offers many of the characteristics of wood but requires virtually no maintenance!

Warranty: Nex-Terra offers a 3-year limited warranty on all of our products to be free from defects in workmanship and/or material(s).

The Manchester Collection



Design your own bin
in four easy steps:

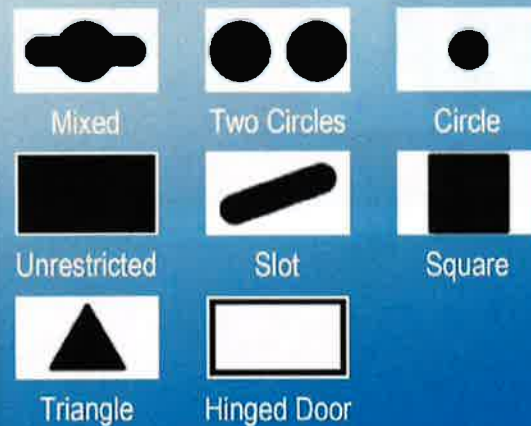
Choose Your Colors:



Choose Your Labels:



Choose Your Openings:



Choose Your Symbols:



Option 3

866-359-8594

[GET A QUOTE](#)

WELCOME BACK! Here are your recently viewed items

[YOUR SHOPPING CART](#)

0 Items

[CONTINUE SHOPPING](#)

[Close this panel](#)

SHOP BY SETTING:

Office Trash Cans
Outdoor Trash Receptacles
Indoor Trash Cans
Park Trash Bins
Hotel Trash Cans
Campus/School Trash Bins
Gas Station Trash Cans
Municipal Trash Cans

SHOP BY CATEGORY:

Commercial Trash Cans
Rubbermaid Containers
Metal Trash Cans and Recycling Bins
Stainless Steel Trash Cans
Plastic Trash Cans and Recycling Bins
Cigarette Receptacles and Disposal
NEW YORK CITY Compliant Trashcans
VIEW ALL Trash & Recycling Products
VALUE PRICED Trash Receptacles
NEW PRODUCTS

Click here to learn about OUR AMAZING CLIENTS

Keene Sideload Double Recycling Station

Ensure proper disposal of waste and recyclables.

Optional hinged flap doors available. Please contact us for more info.

QUICK SPECS

Part Number: N2-19201926DP1

Setting: Indoor/Outdoor

Material: Plastic Lumber

[View Full Specifications](#)

[Email a Friend](#)

Check-out now with Purchase Order or Credit Card

We ♥ our Amazing Customers

Combines style and durability
Fully customizable
Highest grade plastic lumber
[PLASTIC LUMBER CONTAINERS](#)

~~\$2,997.00~~ **\$2,606.00**

Quantity 1

[ADD TO QUOTE](#)
[ADD TO CART](#)

CONFIGURE YOUR BIN

SELECT OPTIONS:

Panel Style
Smooth

Capacity
26 Gallons

Trim Color
Green

TYPE 2

KEENE COLLECTION

Key features:

- Constructed with 97% pure Type 2 recycled plastic
- Offered in a variety of colors and panel options
- Attractive solution for recycling programs
- Opening identification and restrictive
- Right knee included

Available Colors:

plain panel colors



bead board colors



Material Aesthetics:

- Manufactured from high grade of recycled HDPE
- Top-of-the-line pigments and UV inhibitors



Overlay Logos

A color printed logo or company name set in the panel of the furnishing.



Overlay Symbols

Help users identify waste streams visually with overlayed symbols. Available in small, medium and large sizes.



Restrictive Openings

Keep recycling streams from getting contaminated - all at no extra cost.



Opening IDs

Clearly labeled waste and recycling streams help identify openings and reduce cross contamination.



HEADER SIGNS

Header signs are a great way to display messages across your facility.



VAIL ROOF

The Vail Roof Option gives your units a slanted top preventing any unwanted items to be placed on top of the unit.

Construction:



Dado Grooved Posts



Pocket Screw Joinery



Marine-Grade Hardware

Function of unit:



Hinged Door



Metal Reinforcements



Removable Liner



Casters

Add casters for easy mobility. Regular and lockable casters available.



Cam Locks

To protect valuable streams add cam locks to prevent theft.



Panel Options

The Keene Collection is available with plain and beadboard panel options.



Flap Door

Add a basic flap door to fully enclose waste contents from view and reduce pest entry.

Configurations

Single

Double

Triple

Sideload



Topload



***Available in 12-55 Gallon Capacities**

Model #	Capacity	Dimensions	Weight
N1-19201926TP1	26 x 3 = 78 gal	58"w x 21"d x 38"h	133 lbs
N1-19201932TP1	32 x 3 = 96 gal	58"w x 21"d x 42"h	136 lbs
N1-19201938TP1	38 x 3 = 114 gal	68"w x 24"d x 38"h	152 lbs
N1-19201945TP1	45 x 3 = 135 gal	68"w x 24"d x 42"h	183 lbs
N1-19201955TP1	55 x 3 = 165 gal	68"w x 24"d x 46"h	212 lbs

TYPE-A Material

Type-2 Material is impervious to insects, moisture and mold, meaning it won't rot, splinter or become dinner for pests as wood often does. Added UV inhibitors keep its colors stable while bonding agents create complete molecular linkage for optimum structural integrity.

- Manufactured from high-grade of recycled HDPE, and unlike other plastic recycling centers, contains no foam fillers
- Top-of-the-line pigments and UV inhibitors are used to maintain color for decades



Warranty

Nex-Terra offers a three year limited warranty on all of our products to be free from defects in workmanship and/or material(s). Nex-Terra makes no warranty with respect to either the merchantability of our products, or their suitability for any specific purpose or use.



The Keene Collection