

**NORTH BEND PARKS COMMISSION MEETING**  
**July 24, 2024, 6:30pm**  
**North Bend City Hall, 920 SE Cedar Falls Way, North Bend, WA**

**PLEASE NOTE: This meeting will be held in-person at City Hall.** A Zoom meeting link may be set up, upon request, should a member of the public or Parks Commission wish to attend remotely. Contact Principal Planner Mike McCarty at [planning@northbendwa.gov](mailto:planning@northbendwa.gov) to request a Zoom link to attend the meeting remotely.

**AGENDA:**

1. Call to order, opportunity for public comments
2. Minutes of June 12, 2024 Parks Commission meeting (not in packet - to be provided at meeting)
3. Recommendation on images for North Bend Downtown Garbage and Recycling Cans (not in packet – to be provided at meeting)
4. Conceptual Plaza Concepts for Ballarat Ave.
  - a. See conceptual plans prepared by Site Workshop and initial staff comments.
  - b. Seeking Parks Commission review and comments.
5. Conceptual Middle Fork River Overlook Plaza and SE North Bend Way Pathway Connection between Tanner Road and Snoqualmie Valley Trail. (not in packet – to be provided at meeting)
  - a. See conceptual plans prepared by Scott Holsapple Design
  - b. Seeking Parks Commission review and comments.
6. Shoreline Public Access Plan being prepared by City’s consultant Facet – Introduction by Kyle Braun (Facet)
  - a. Public survey will be on City website by the time of this meeting.
  - b. Public Open house tentatively September 2024
  - c. Joint Planning Commission/Parks Commission meeting in early 2025
7. Preparation for July 25 Farmer’s Market Parks Booth
  - a. 1<sup>st</sup> Shift 4-6pm – Min 2 Commissioners: \_\_\_\_\_ and \_\_\_\_\_
  - b. 2<sup>nd</sup> Shift 6-8pm – Min 2 Commissioners: \_\_\_\_\_ and \_\_\_\_\_
  - c. Items to include: WH Taylor and Riverfront Park Master Plans, Middle Fork Plaza and SE North Bend Way Pathway Connection Conceptual design, Shoreline Public Access Plan and survey link, general park and trail improvements display boards.
8. Update on Small Park Improvement budget purchases:
  - a. Park directional signs – Ordered in in production
  - b. Bike racks for downtown – Arrived and awaiting installation
  - c. Dog Waste bag stations for Tennant Trailhead Park and Dahlgren Family Park – Ordered awaiting delivery
  - d. Potential purchase – Picnic tables. Awaiting quote to determine costs.

**Agenda sent to: Parks Commissioners, Mayor, City Administrator, City Clerk, CED Director, Principal Planner, Senior Planner, Public Works Parks Lead**



# Preferred Master Plan - Full Site



\*Conceptual final master plan subject to future changes, refinements, and responses to adjacent land development



# Guiding Principles

All of options aim to address the following objectives:

## Manage views

- Provide interest on the ground and vertical planes
- Screen foreground elements (North Bend Way, parking)
- Capitalize on views to beyond features (Mount Si, WH Taylor Park)

## Provide edge protection

- Clearly define the north edge of the street
- Prevent cars from turning south onto Ballarat Avenue.

## Invite users

- Create a strong invitation into and through the pedestrianized street.

## Provide opportunities for seating

- Offer users comfortable seating options
- Incorporate artful and unique elements

## Offer flexibility and playfulness

- Create a place that has identity
- Allow for flexible usage
- Embrace fun elements

## Incorporate lighting

- Use lighting for atmospheric benefit at all times of the year



Site Photos





# Site Analysis

FOUR  
WAY  
STOP

MAIN ROAD -  
STREET IMPROVEMENTS  
SCHEDULED

FOREGROUND VIEW  
CAR DEALERSHIP

E NORTH BEND WAY

CLEAR VIEW OF MNT  
SI IN THE  
BACKGROUND

SHRUB

NOISE OF TRAFFIC - STOP / START  
ESPECIALLY TRUCKS

50'-0"

+444.59

+444.28

BENCH

RESTAURANT  
COVERED PATIO

OVERHEAD WIRES

IVY MOUND

INCH  
DROP

+445.66

+445.92

18'-10"

10'-4"

44'-0"

ASPHALT - DAMAGED  
IN PLACES, BUT  
BASICALLY LEVEL

QUIETER  
LESS  
TRAFFIC  
NOISE

ADA  
PARKING

+445.46

END OF BALLARAT  
UNCLEAR

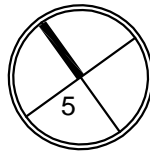
E McCLELLAN STREET

+446.39

FUTURE ONE WAY

VIEW OF PARK  
(FUTURE CORRIDOR)

VIEW OF  
DEPOT  
BUILDING

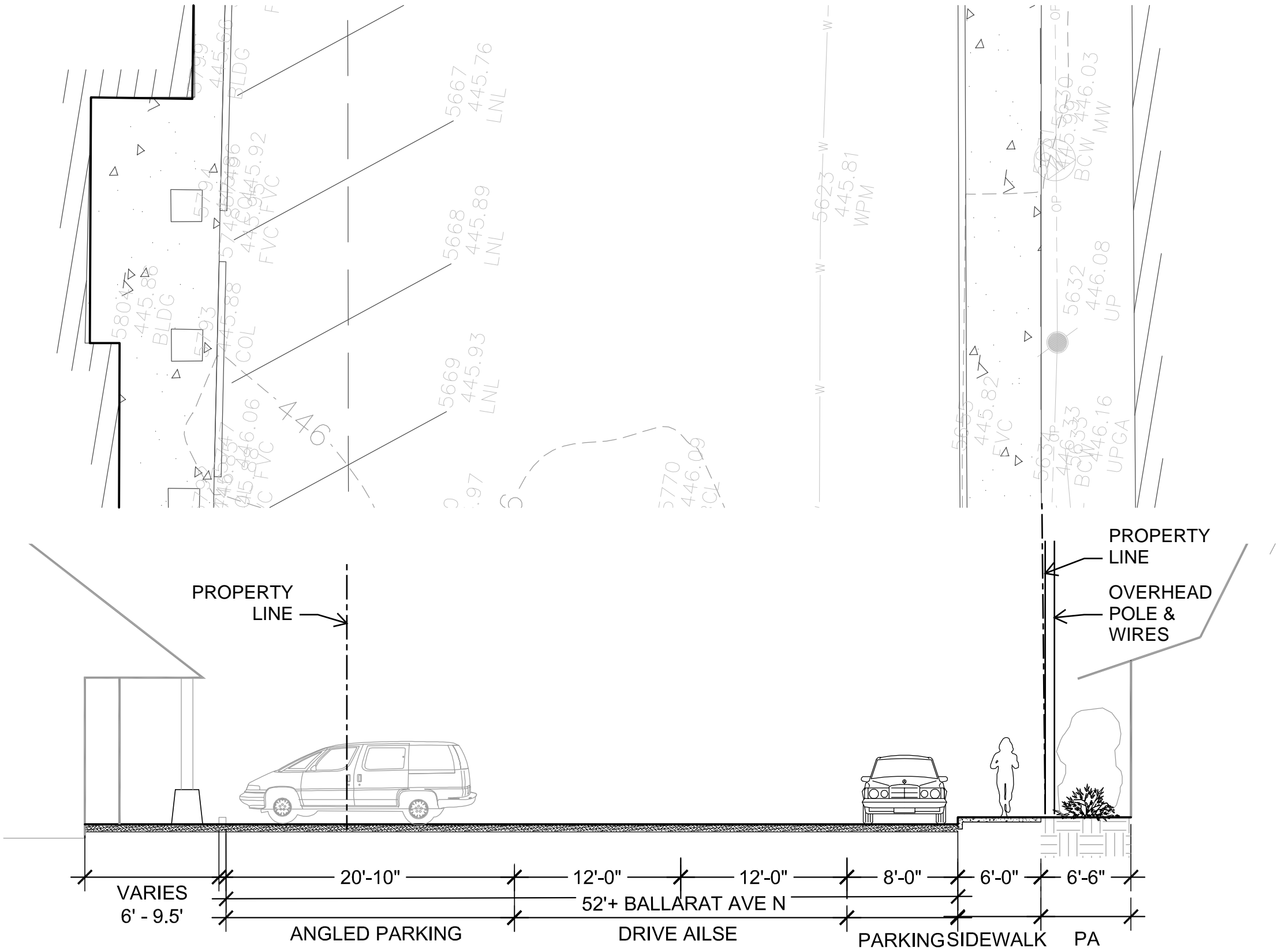








Section

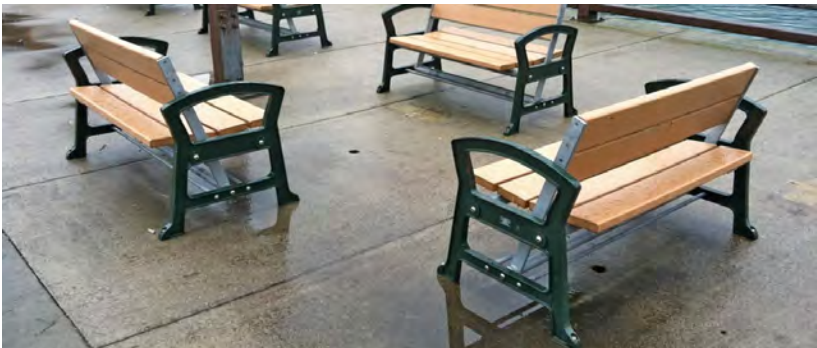




Option 1 : Ready, Set, Go



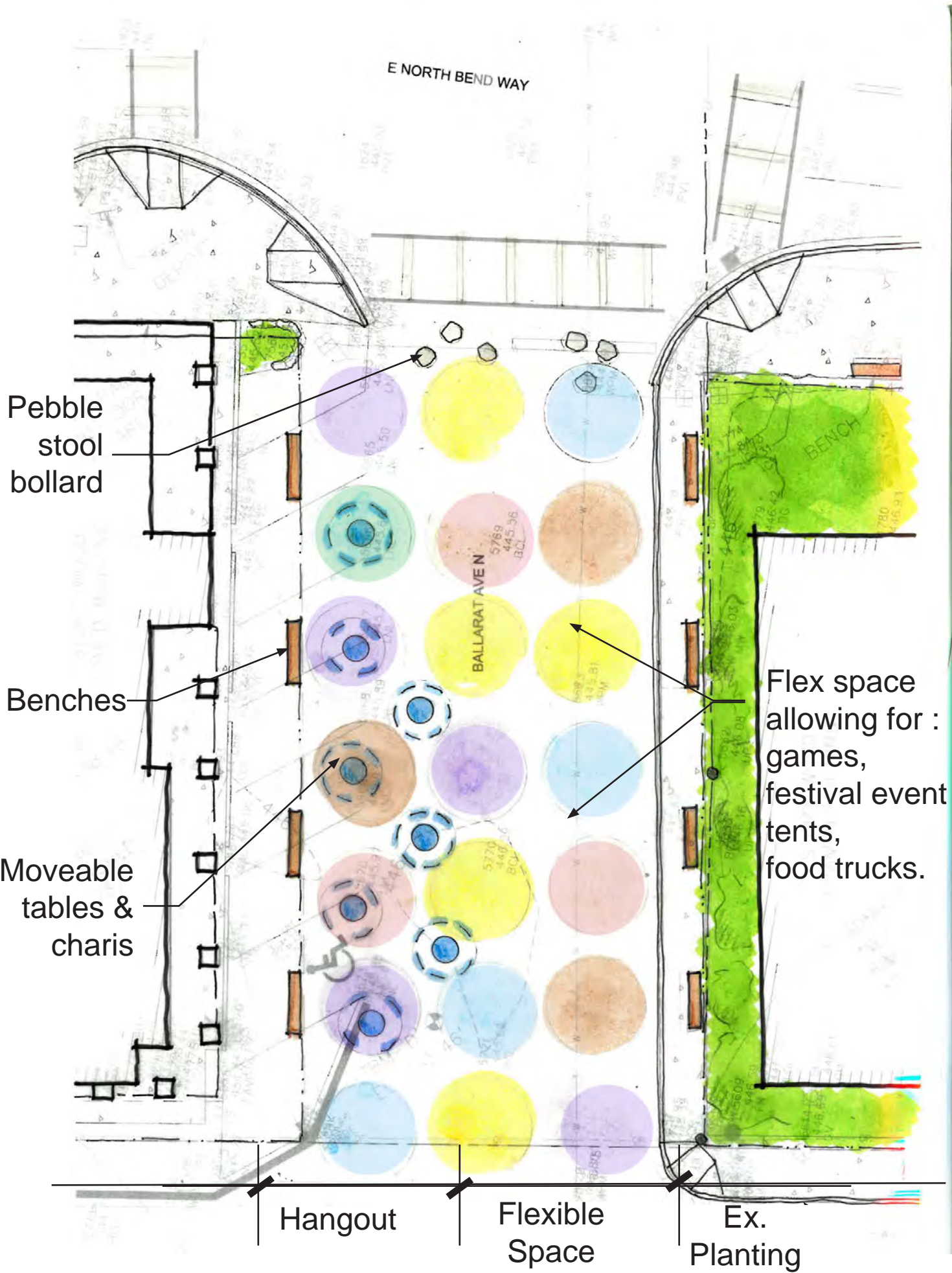
Bollard restricting vehicular access”  
Stoop seating, planters, boulders, bollards.



Seating opportunities - two sided



Moveable seating allowing for flexible use of site.



Painted ground plane



Games: Foos ball, chess, corn hole, ring toss



Temporary event tents, games.



Option 2 : Front Porch



Family style tables and bench seating



Long bench



Planters with seating and depth for trees. (Moveable)



Interactive Mural - focus on Mount Si



Telescope positioned to focus on Mount Si



Overhead lighting



Option 3 : Stay a while



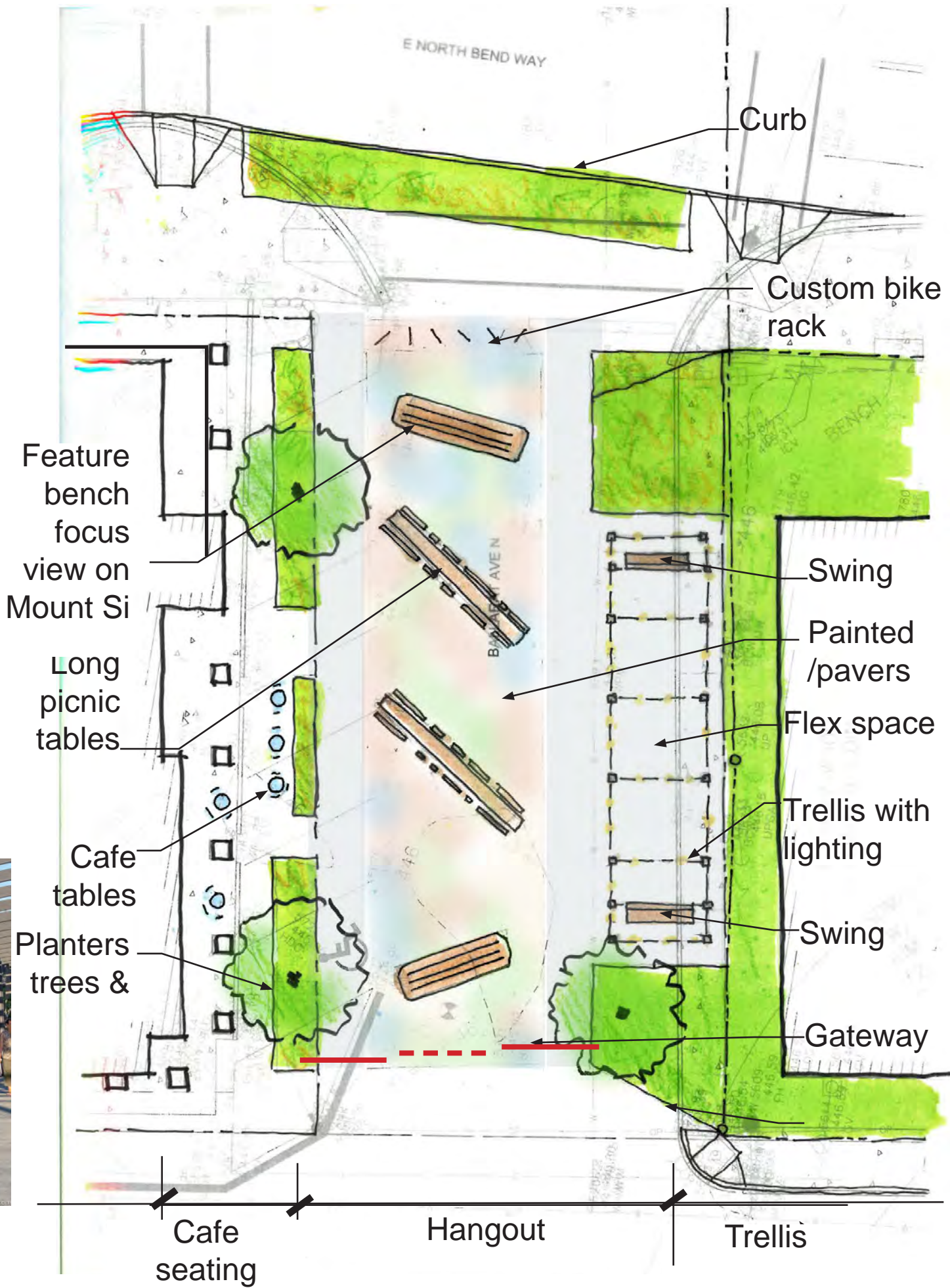
Custom feature bench



Open plaza space with benches and moveable furnishings



Tellis with swing seats



Custom bike rack - spell Mount Si



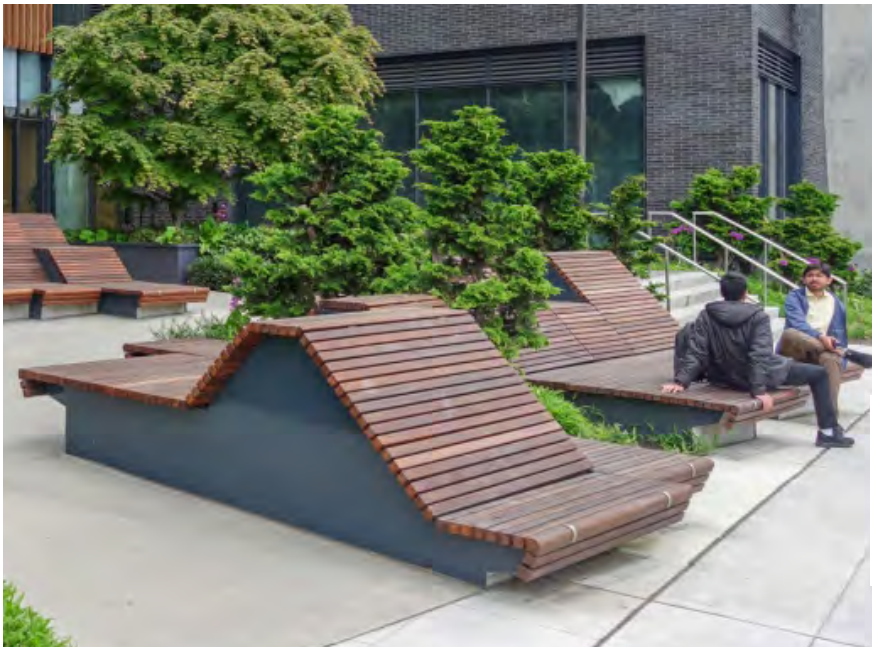
Long picnic tables



Gateway



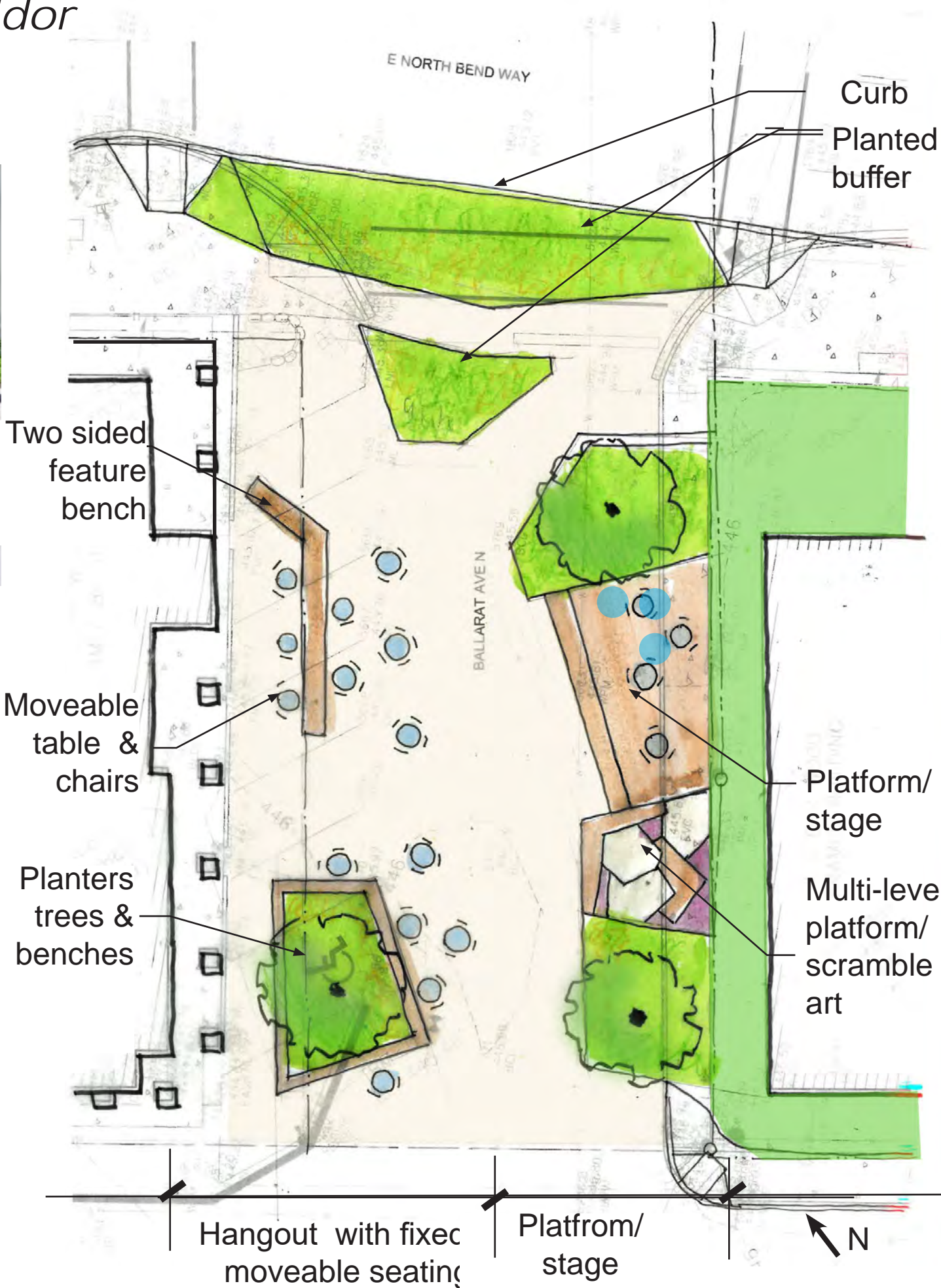
Option 4 : The view Corridor



Two-side feature bench



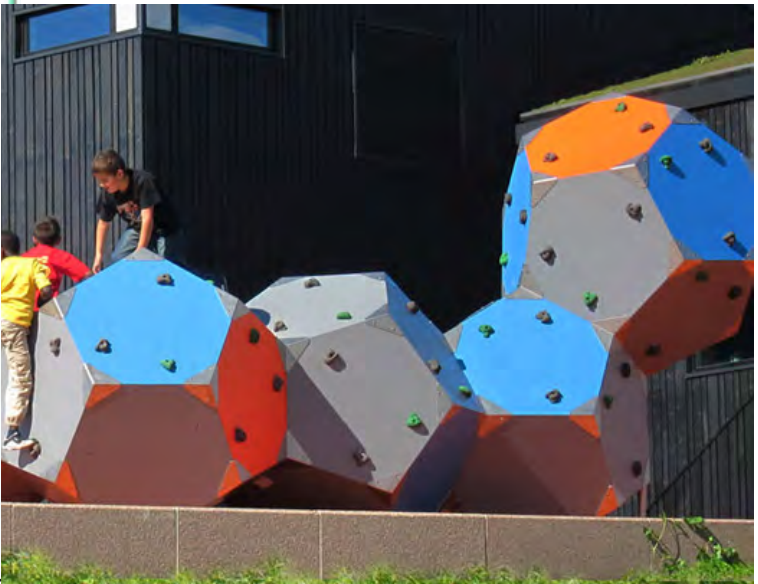
Planters with seating and depth for trees. (Moveable)



Flexible platform for tables and chairs or stage



Mult level platform providing seating/ scramble opportunities



Scramble art feature



Option 5 : Toe of Mount Si



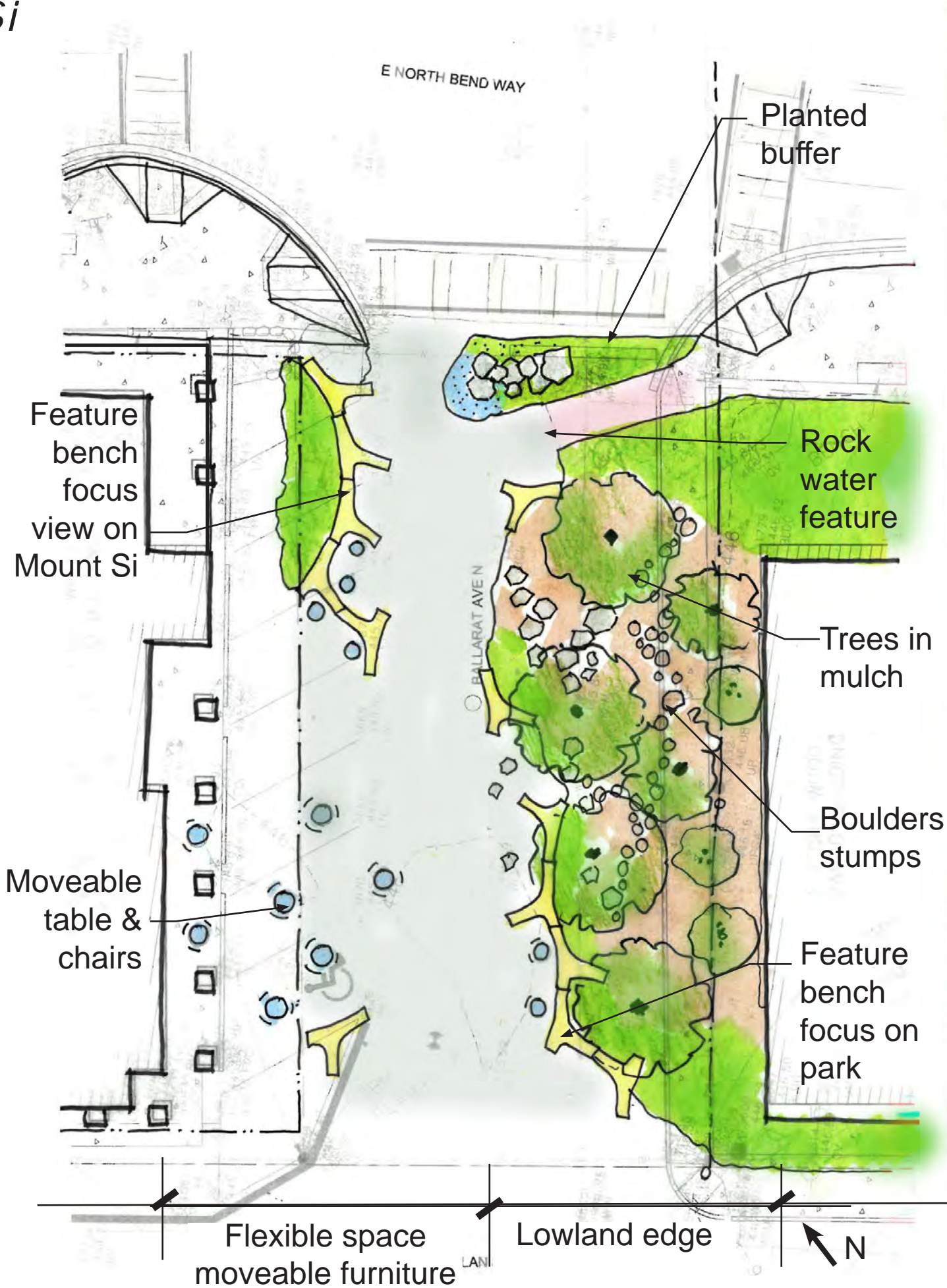
Pre-fabricated stone twig bench.



Irregular shaped bench creates seating pockets for moveable table and chairs.



Tables and chairs



Lowland trees in mulch with boulders & hammocks.



Boulders



Tree stumps for climbing over





Paving material and bollards define pedestrian vs. vehicular uses



Pedestrian friendly outdoor seating areas



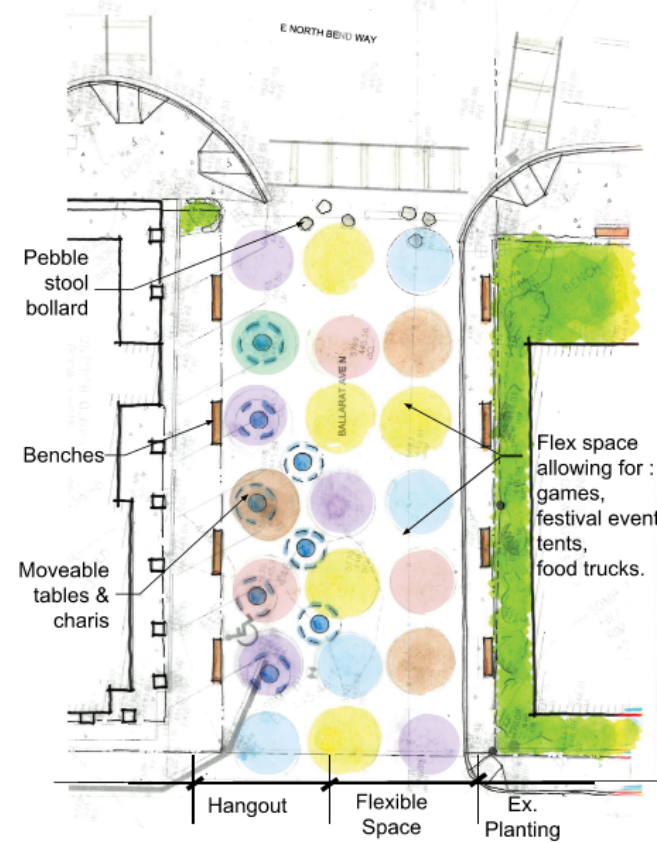
Pedestrian only street



Planters define pedestrian zone



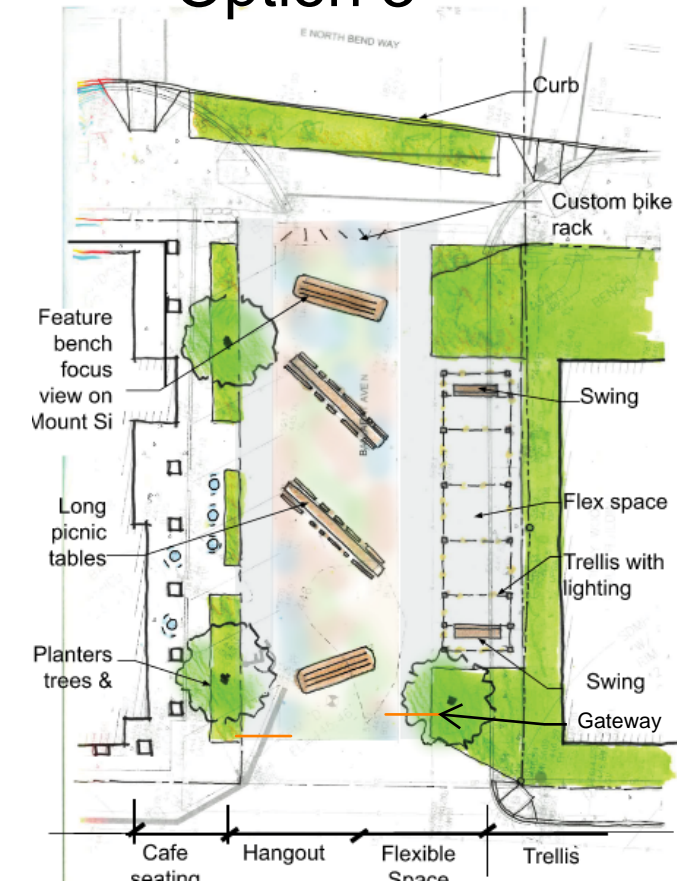
## Option 1



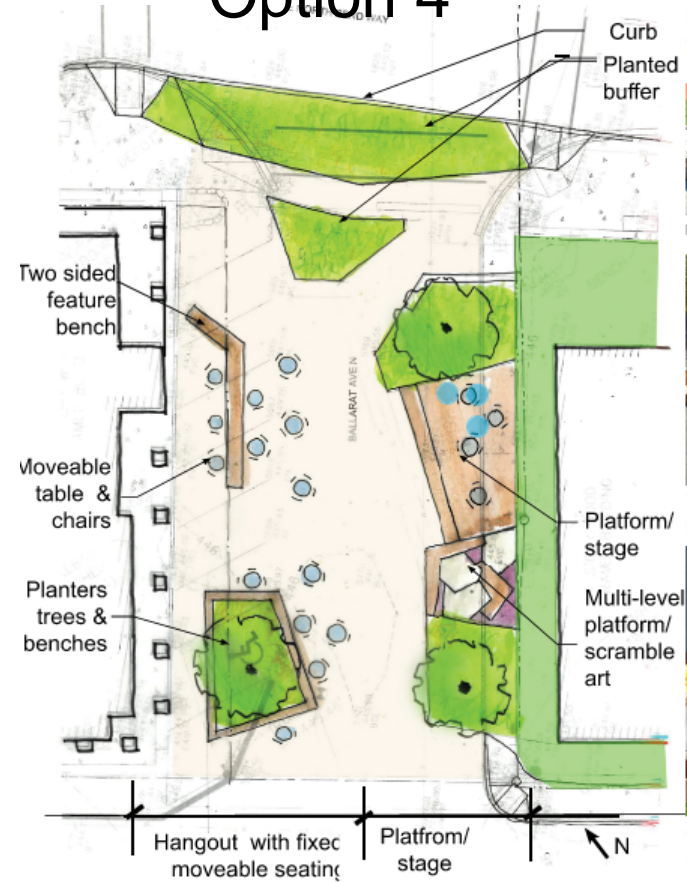
## Option 2



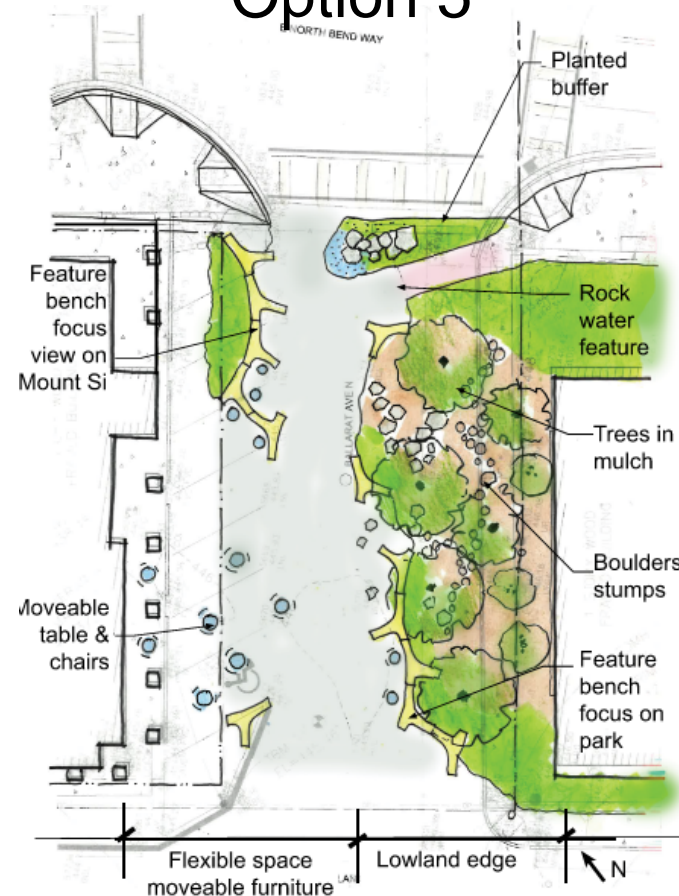
## Option 3



## Option 4



## Option 5



Each option can incorporate any of the following elements:

- Interactive Mural
- Telescope
- Games - Corn Hole, Chess, Foosball
- Seat swings
- Scramble art platform
- Trellis
- Family style tables
- Moveable tables and chairs
- Feature bench - two sided
- Pre-fabricated bench with multiple sides
- Long bench
- Custom bike rack
- Moveable planters with seating
- Platform
- Curb bulb
- Extended Curb
- Bollards
- Planters
- Planted Curb
- Painted ground plane
- Pavers
- Catenary lighting
- Gateway



**From:** [Mike McCarty](#)  
**To:** [Mark Rigos](#); [Rebecca Deming](#); [Tom Mohr](#)  
**Cc:** [Mayor Miller](#); [David Miller](#)  
**Subject:** RE: Ballarat  
**Date:** Friday, July 5, 2024 9:36:00 AM

---

Thanks Mark,

I discussed this with Rebecca and CED, and here are our comments:

1. We concur with all of your thoughts below.
2. A priority should be to construct a continuous curb line along North Bend Way to better close off the intersection, as with options 3 and 4. Keeping the same existing intersection radii and crosswalk at the entrance to this area (as with options 1, 2 and 5) may be confusing to drivers, thinking this is still somewhere to drive into. If some vehicle access is still desired, that could be done with a limited rolled curb or curbcut along the otherwise continuous curb line.
3. Having the raised speed table across McClellan is particularly key to tie the whole plaza together with WH Taylor Park and making it feel continuous.
4. We particularly like the platform/stage in option 4, as this area would be ideal (even more than within the WH Taylor Park) for events such as the bands for the tree lighting or block party, as it is still in close proximity with the downtown.
5. It would be good if possible to get an easement from the gas station property owner to better tie in the overall landscape design of the plaza area up to the gas station building, rather than have a conventional landscape buffer behind that property line. (This would be especially key if the stage is developed there.)
6. We like the organic, non-linear feel of option 5, but feel it has too much landscaping area, taking away too much space for event activities.
7. The telescope platform is particularly great near to NB Way, and is a way to draw pedestrians into the plaza area.
8. We may wish to do some sort of sign that indicates parking around back on McClellan (maybe that is the next block east where McClellan enters NB Way).

Thanks,

Mike

Mike McCarty, AICP  
Principal Planner  
City of North Bend Community and Economic Development  
920 SE Cedar Falls Way  
North Bend, WA 98045  
(425) 888-7649





---

**From:** Mark Rigos. <MRIGOS@NORTHBENDWA.GOV>  
**Sent:** Wednesday, July 3, 2024 5:39 PM  
**To:** Mike McCarty <MMCCARTY@NORTHBENDWA.GOV>; Rebecca Deming <RDeming@northbendwa.gov>; Tom Mohr <TMOHR@NORTHBENDWA.GOV>  
**Cc:** Mayor Miller <MMILLER@NORTHBENDWA.GOV>; David Miller <DMiller@northbendwa.gov>  
**Subject:** RE: Ballarat

Attached are the full PRELIMININARY pdfs

---

**From:** Mark Rigos.  
**Sent:** Wednesday, July 3, 2024 11:53 AM  
**To:** Mike McCarty <[MMcCarty@northbendwa.gov](mailto:MMcCarty@northbendwa.gov)>; Rebecca Deming <[RDeming@northbendwa.gov](mailto:RDeming@northbendwa.gov)>; Tom Mohr <[TMohr@northbendwa.gov](mailto:TMohr@northbendwa.gov)>  
**Cc:** Mayor Miller <[MMILLER@NORTHBENDWA.GOV](mailto:MMILLER@NORTHBENDWA.GOV)>; David Miller <[DMiller@northbendwa.gov](mailto:DMiller@northbendwa.gov)>  
**Subject:** FW: Ballarat

Hi Mike,

Please see attached. I don't know if you have had a chance yet to review these options and elements. Option 1 was simply a temporary idea that we probably won't do. Options 2-5 have many different elements. I'd like to know your and Rebecca's feedback on specific elements of Options 2-5 and/or if you have a favorite Option. Mayor Mary and I like certain portions of these options. Mary was able to attend the meeting in mid June when Rebecca was out.

Here are some of my preferences:

1. I'd like to rip out all ex. pavement.
2. I'd like the final surfacing to be brick or concrete (I think what we did at Volition alley several years ago looks really good) with some soft surface landscaping included.
3. I'd like to underground the ex. overhead power lines. Tom, please check if these are transmission or distribution lines.
4. I'd like to place shrubbery in between EB NBW and a newly located sidewalk (shown in Option 4). NBW has quite a bit of traffic noise and this will reduce it.
5. I'd like to lower the grade by up to 0.5-1 foot for improved drainage. NB Bar and Grill is somewhat in the low point now.



6. I'd like to construct a pondless waterfall feature to further reduce NBW traffic noise (in Option 5).
7. I'd like to include a telescope platform oriented toward the top of M. Si but place it in the south side (in Option 2).
8. I'd like to include the feature benches focus view on Mt Si (in Option 5)
9. I'd like to include the boulder / stumps and feature benches on east side (in Option 5), but probably not that wide.
10. I'd like to include a speed table across McClellan Alley that would continue south and cross the new tracks.
11. We should consider some type of spillover seating from NB Bar and Grill, similar to Volition Alley.

Please let me know your feedback. I'd really like to know CED's feedback on this. Thx!

Thanks.

Sincerely,  
Mark Rigos, P.E.  
Deputy City Administrator / Public Works Director  
City of North Bend  
920 SE Cedar Falls Way  
North Bend, WA 98045  
(425) 888-7650

---

**From:** Alison Maitland Scheetz <[alisonms@siteworkshop.net](mailto:alisonms@siteworkshop.net)>  
**Sent:** Friday, June 21, 2024 11:41 AM  
**To:** Mark Rigos. <[MRIGOS@NORTHBENDWA.GOV](mailto:MRIGOS@NORTHBENDWA.GOV)>; Clayton Beaudoin <[claytonb@siteworkshop.net](mailto:claytonb@siteworkshop.net)>  
**Subject:** Ballarat

Mark,

Here is a one page snapshot of the options.

Alison

**Alison Maitland Scheetz**  
**SiteWorkshop** 3800 Woodland Park Ave N. Suite 200, Seattle WA 98103  
o 206 285 3026, m 206 579 4254 | [www.siteworkshop.net](http://www.siteworkshop.net)