

NORTH BEND PARKS COMMISSION MEETING

February 26, 2025, starting at 6pm

North Bend City Hall, 920 SE Cedar Falls Way, North Bend, WA

PLEASE NOTE: This meeting will be held in-person at City Hall.

Because the workshops will be held in-person including open-house style dialogue, online participation will not be available.

AGENDA:

1. 6:00 p.m. Public Workshop #1 – North Bend Shoreline Public Access and Trails Plan (City consultant, Facet)
 - a. Powerpoint presentation by consultant Facet (30 min.)
 - i. Introduction - Why and how?
 - ii. Review of the public engagement process and results to-date.
 - iii. Development of concepts.
 - b. group exercise – Project voting/dollar exercise for prioritizing project concepts (30 min.)
2. 7:00 p.m. Public Workshop #2 –
 - a. Introduction to overall project purpose and interrelated separate projects (Public Works Director Mark Rigos)
 - b. Presentation of the plaza concepts (City consultant, Site Workshop)
 - c. Open House dialogue, question and answer.
3. 8:00 p.m. Regular business:
 - a. Minutes of January 22, 2025 Parks Commission meeting

Agenda sent to: Parks Commissioners, Mayor, City Administrator, City Clerk, CED Director, Principal Planner, Senior Planner, Public Works Parks Lead

Public Notice – February 26, 2025 Parks Commission Workshops

6pm – Shoreline Access and Trail Plan, 7pm – Ballarat Ave. Plaza Proposal

The North Bend Parks Commission will host two back-to-back public workshops on Wednesday, February 26 at the North Bend City Hall, 920 SE Cedar Falls Way.

Starting at **6pm**, the City, and consultant Facet will hold a workshop on the new North Bend Shoreline Public Access and trail plan being prepared by the City's consultant, Facet. The intent of the plan is to guide the planning and development of shoreline trail and access projects along the Middle Fork and South Fork Snoqualmie Rivers, while protecting the shoreline from recreational use impacts and degradation. The workshop will provide findings based on public input received to-date, and recommendations for potential future projects.



Starting at **7pm**, the City, and consultant Site Workshop, will hold a workshop on conceptual plans for a new public plaza at the terminus of Ballarat Avenue between the North Bend Bar and Grill (145 E. North Bend Way, and the Shell gas station. The plaza (currently roadway) is intended to provide a public gathering place and link the downtown with William H. Taylor Park.



Because the workshops are open-house format, they will not be available to join online. For more information, contact Planning Manager Mike McCarty at (425) 888-7649 or email mmccarty@northbendwa.gov.

Of note, members of the North Bend City Council and Planning Commission have been invited to attend and it is possible that a quorum of either of those bodies may be present. However, no final action will be taken.

WORKSHOP 1 MATERIALS:

SHORELINE PUBLIC ACCESS AND TRAIL PLAN

North Bend Shoreline Public Access & Trails Plan

February 26, 2024



Public Open House #2

➤ Project Purpose & Need

Topics of Discussion

- Need to Plan
- Project Schedule
- Public Engagement
- Initial Results
- Draft Conceptual Projects
- Next Steps
- Breakout Activity

The Need to Plan

WAC 173-26-221 (SMP Public Access Policy #6): State calls for an **integrated shoreline area public access system** identifying specific public needs and opportunities to provide public access in-tandem with environmental protection.

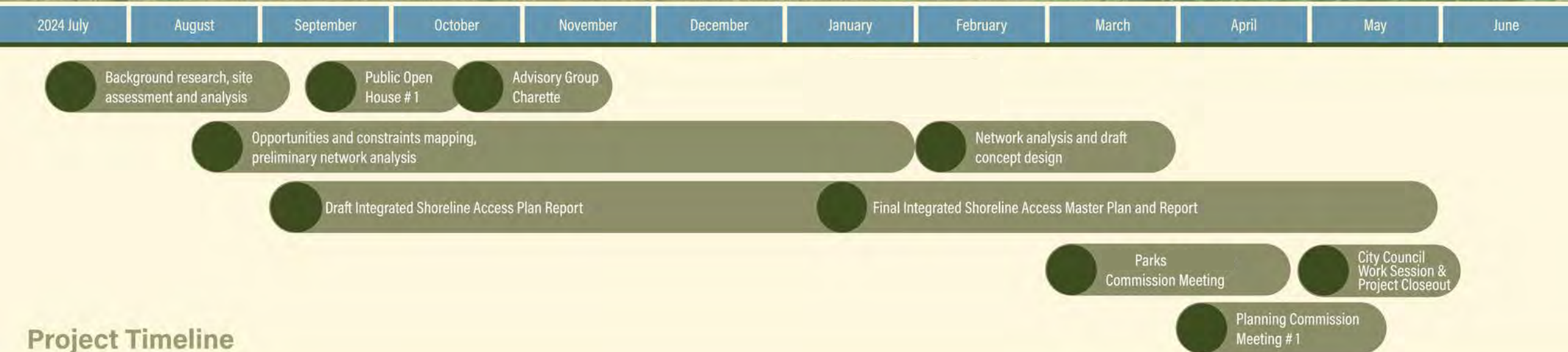
- Helps replace site-by-site requirements
- Involves the public in guiding decision making
- Provides documentation supporting future grant funding

The Need to Plan

- Steady population growth within the city and region.
- Recreation impacts wildlife and the public land we value.
- Nationally, the number of “casual participants” in outdoor recreation (less than once a month) has steadily grown for more than a decade.
- The community can plan and manage where, how, and what type of recreation use occurs.



Project Schedule



Project Timeline

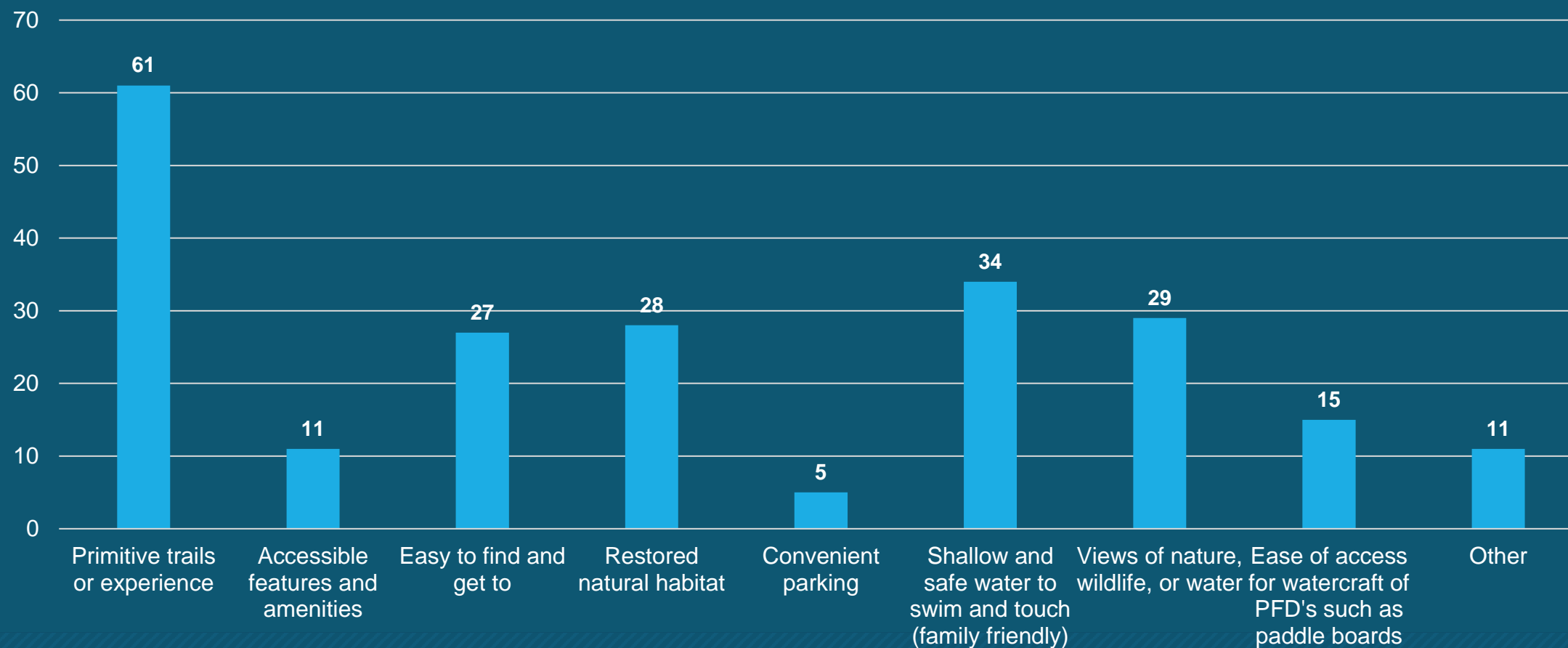
Public Engagement

- Online Survey
- Open House #1
- Advisory Group Meeting
- Open House #2 (Parks Commission Meeting)

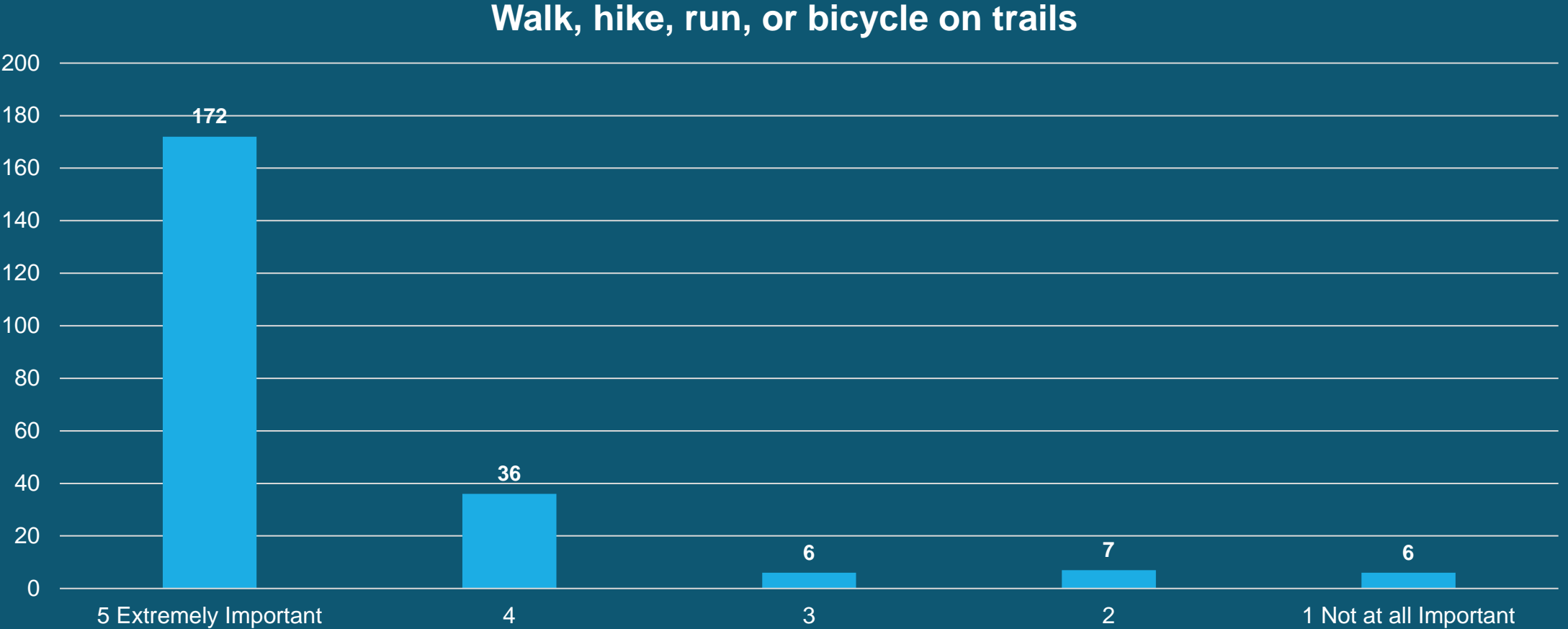


Public Engagement

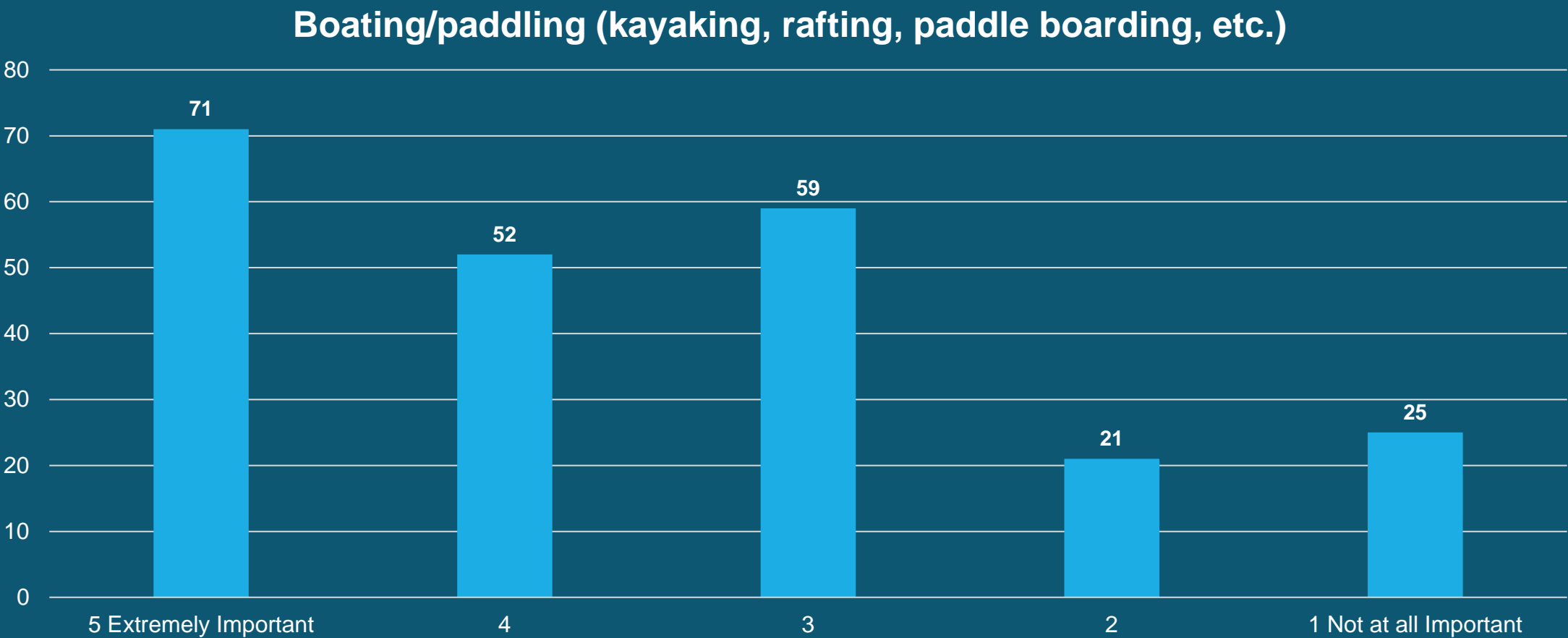
SURVEY RESULTS: When recreating or enjoying the shoreline and/or shoreline access locations what do you look for in the facilities?



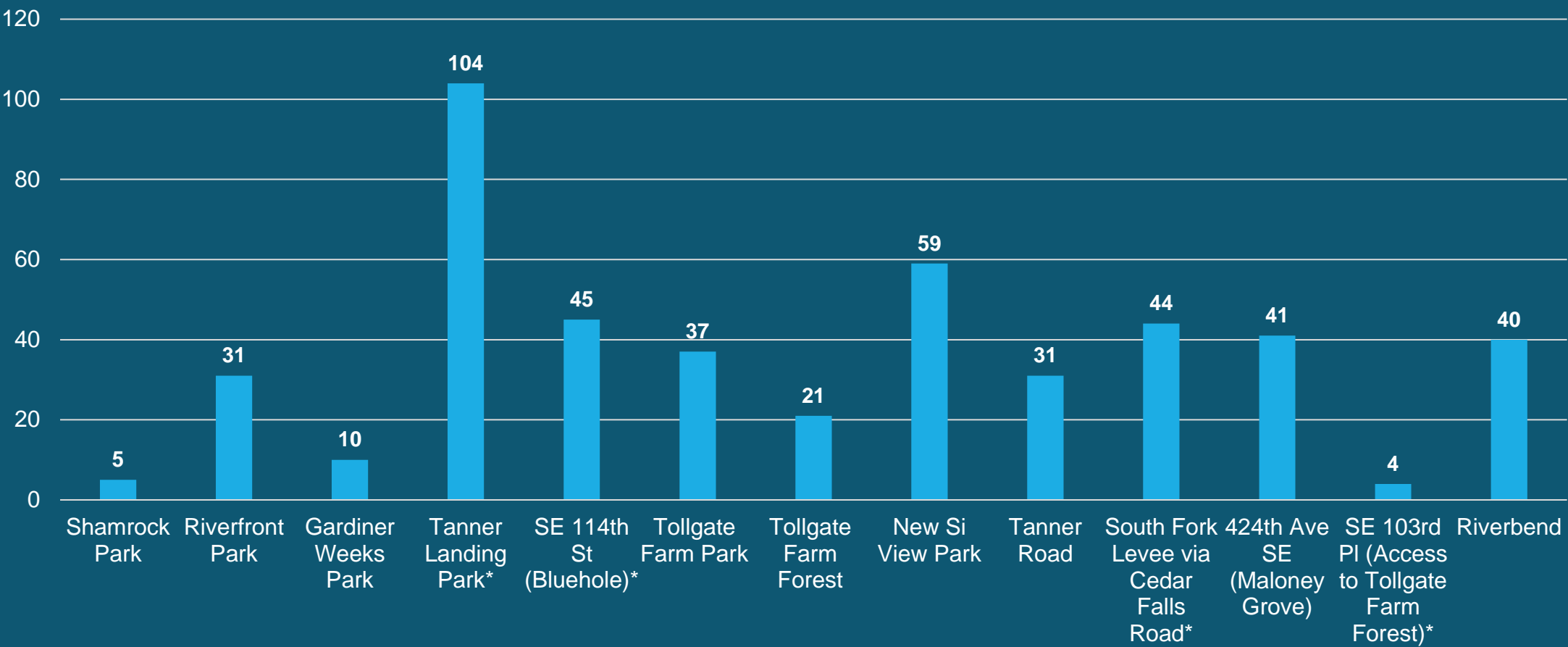
SURVEY RESULTS: How important is it to be able to do each of the following on shorelines and rivers in North Bend? (1 to 5 with 5 meaning “extremely important” and 1 meaning “not at all important”)



SURVEY RESULTS: How important is it to be able to do each of the following on shorelines and rivers in North Bend? (1 to 5 with 5 meaning “extremely important” and 1 meaning “not at all important”)



SURVEY RESULTS: Which shorelines and water access in North Bend do you visit the most?



Public Engagement

➤ Open House #1 Feedback

- Formalize existing Access
- Trail Gaps & Private Property
 - Clarity on Property Ownership
- Shoreline Access Improvements
- Signage & Maps
- Parking Considerations
- Environmental stewardship (initial comments received)



Public Engagement

- **Advisory Board feedback**
 - Leverage multi-benefit projects
 - Review projects based upon proximity
 - Bundling together
 - Acknowledge wildlife migration corridors
 - Split rail fence to limit access
 - Separate users to avoid conflict
 - Water access VS beach enjoyment



Draft Conceptual Projects

➤ Questions

- Location – Where?
- Type – What?

➤ Analysis

- Precedent research
- GIS / Landscape scale
- Site visits / Local scale

➤ Support

- Alignment with other plans
- Community feedback
- Funding and management considerations



Skykomish Access – Credit Thomas O'Keefe

Analysis: Precedent research

➤ Recreation impacts

- Factors include frequency of use, type of recreation, season, and how sensitive the habitat is.
- In general, research recommends concentrating recreation use in less sensitive area
- Higher intensity use requires higher intensity of both direct and indirect management
- Its important for management to be adaptive and to monitor for and correct impacts

Recreation impacts on habitat and wildlife



Analysis: GIS/ Landscape Scale

What areas are less sensitive?

Analyze mapped data to prioritize locations:

- Avoid sensitive areas (like mapped wetlands)
- Target publicly owned-land
- Look for gaps in public areas to either view or access the shoreline
- Consider proximity to population density

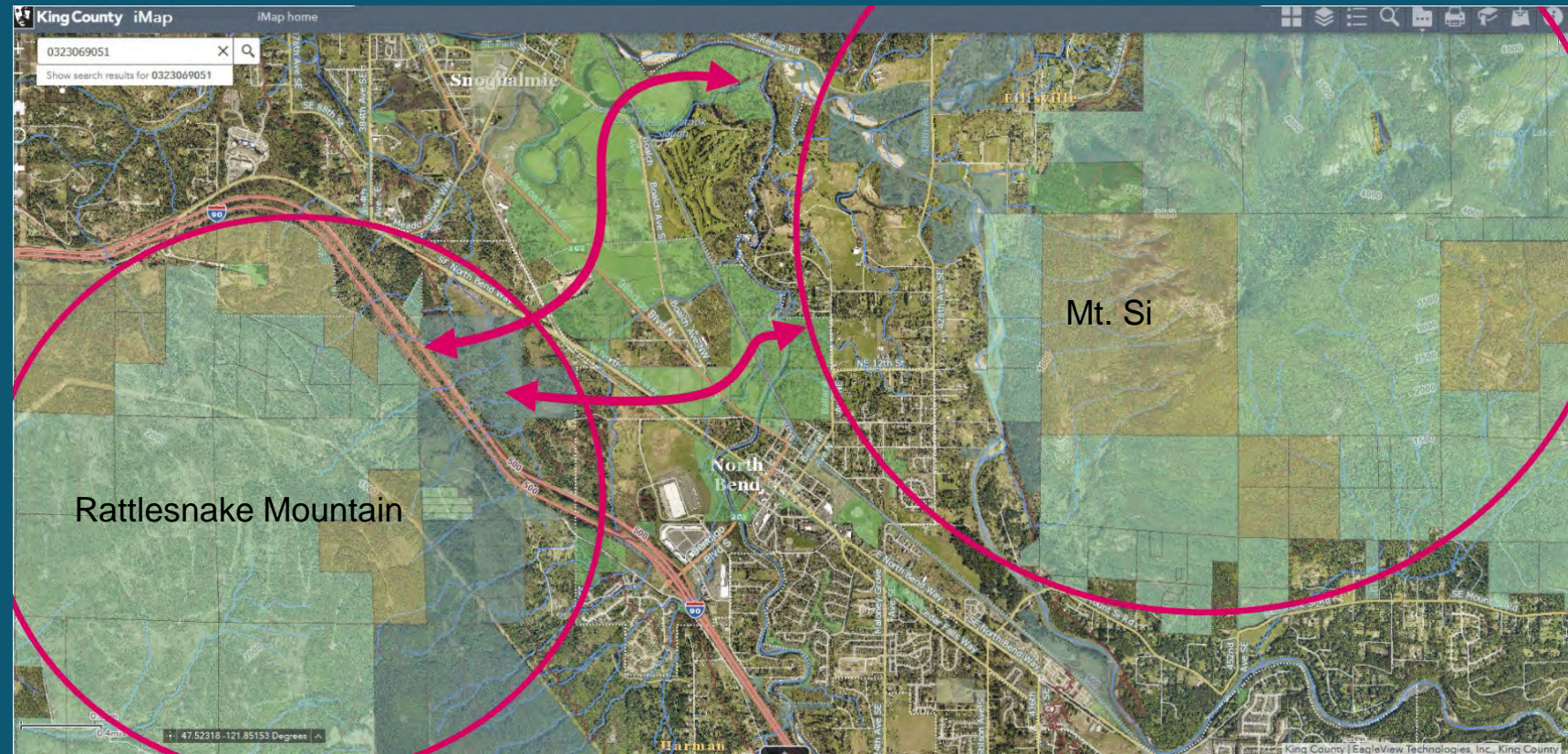
Analysis: GIS/ Landscape Scale

Zoom out to see landscape scale spatial patterns and connections:

- Wildlife movement
- Seed dispersal
- Animal foraging patterns
- Groundwater
- Stream flows

Impacts to Connections:

- Roads and trails can dissect these spaces
- Trailheads and developed areas can perforate these spaces



Analysis: Site Visits / Local Scale

Observe local conditions:

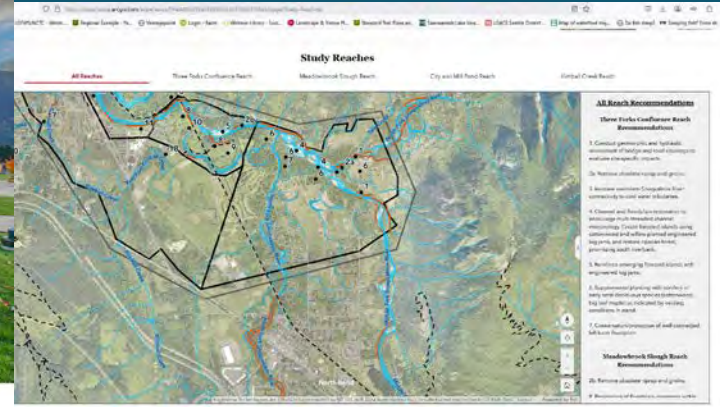
- Vegetation
- Potential for restoration
- Signs of wildlife use / sensitive environmental features
- Existing impacts / signs of trampling
- Adjacent uses and connections
- Accessibility
- Current public use and public 'feel'



Support: Alignment with other plans

Existing Planning Documents

- North Bend Comprehensive Plan adopted Parks and Open Space Element, 2024
- Si View Parks District Comprehensive Plan, 2017
- Riverfront Park Master Plan, Site Workshop, Herrera, 2023
- North Bend Downtown Master Plan, MAKERS, WHPacific, 2008
- North Bend Shoreline Analysis Report, The Watershed Company and ICF International, 2011
- 10-year Recreation Strategy for WDFW Managed Lands, June 2022
- Upper Snoqualmie Resilient River Corridor Management Plan, Snoqualmie Tribe, Natural Systems Design, Headwater People, June 2022



#	Project	Cost Est.	Funding Sources	2014	2015	2016	2017	2018	2019
Trail Construction:									
1	Brandy Prairie Loop Trail at Meadowsbrook Farm	1,300,000	PF/SG/ND/1st/Sequoia	1,300,000					
2	Tenant Trailhead Park bicycle and pedestrian trails	293,000	PF/MP/BC/NC Funds	1,300,000					
3	Colgate from St. Lawrence Mills to Lake Trail	453,000	PF/MP/BC/ND/18th	450,000					
4	Brandy Boulevard S. Multi use Trail to Tiverton Trailhead Park	1,720,000	18th/21st/MP/ND/18th		1,710,000				
5	Patton Trail Construction: Public Works to Sequoia Valley Trail	1,617,000	18th/21st/MP/ND/18th			1,140,000			
6	1. Fork Left Bank Southfork Key Trail with steel stiles across foot including foot (cont)	780***	PF/SG/ND/18th				2,000,000		
7	Algonquin River Forest Trail and Bridge over Silver creek		PF/ND/18th						900,000
Park Improvements:									
8	Canoe Trailhead Park Site Improvements (including trails)	2,400,000	PF/CC Grant	2,400,000					
9	New Overflowed Parks in Neighborhood Parks	71,000	PF/18th		70,000				
10	Off-roading park within existing City Park (Bridle Path/Grasslands Family Park)	43,000	PF/18th		40,000				
11	Improve Park Phase 3 Plaza and Playground Improvements, irrigation, and fencing	1,130,000	PF/MP Bond			1,100,000			
12	1. Vase Neighborhood Park New Play Equipment	515,000	PF				1,140,000		
13	St. Vrain Community Park Current Expansion park improvements (not including aquatic center)						1,000,000		
14	Spring Park (John Burstein Nature Institute TRS)	1,601,000	PF/SG/ND/18th/MP/ND Bond					1,600,000	
15	William H. Taylor Park Improvements	780***				780***			
16	Lawrence Park Improvements	780***	PF/SG/ND				780***		
Park and Open Space Land Acquisition:									
17	Acquire new park in southern part of City	1,800,000	PF/MP/ND Bond						1,800,000

Key:

- PF – Park Impact Fees
- SG – Sewerage/Project Tax
- ND – trail and bicycle facility Mitigation fees
- MP/ND – St. Vrain Metropolitan Parks District Bond Funds
- CC – Schools Organizations
- B – Bond
- DM – Development Mitigation Contribution
- 18th – 18th Century Square Tax

Notes:

*** Projects are not listed in any order of priority.

** Cost estimates to be developed through project design/engineering in 2013.

Support: Community Feedback

We heard from you:

1. Swimming, wading (water access)
2. Viewing, walking along the water (close tie to 1st place)
3. Paddling/boating in the water
4. Very small number of respondents mentioned fishing



DNR Mine Creek – Credit Thomas O’Keefe

Water Access Types

Natural stone stairs and platform



Red Lock River Access – Credit National Park Service

Stairs parallel to road bridge crossing



Horseshoe Bend, Nooksack river – Credit Thomas O'Keefe

Water Access Types

Trail across face of levee down to water



Shenandoah riprap trail – Credit KTNPBLOG user Travis

Gently sloped gravel beach



Goodell Creek Boat Launch – Credit Thomas O'Keefe

Draft Concept Projects Overview

5 Draft projects for water access:

- Access types vary
- Location in relation to levee varies
- Size of proposed impact footprint varies
- All have element of environmental restoration
- 'Shovel-readiness' varies

1 General project category for expanding public trail network



Next steps

- Gather input on concepts and preferences
- Use scoring methodology to prioritize recommendations
- Include recommendations for policy or code updates
- Submit report for approval and adoption



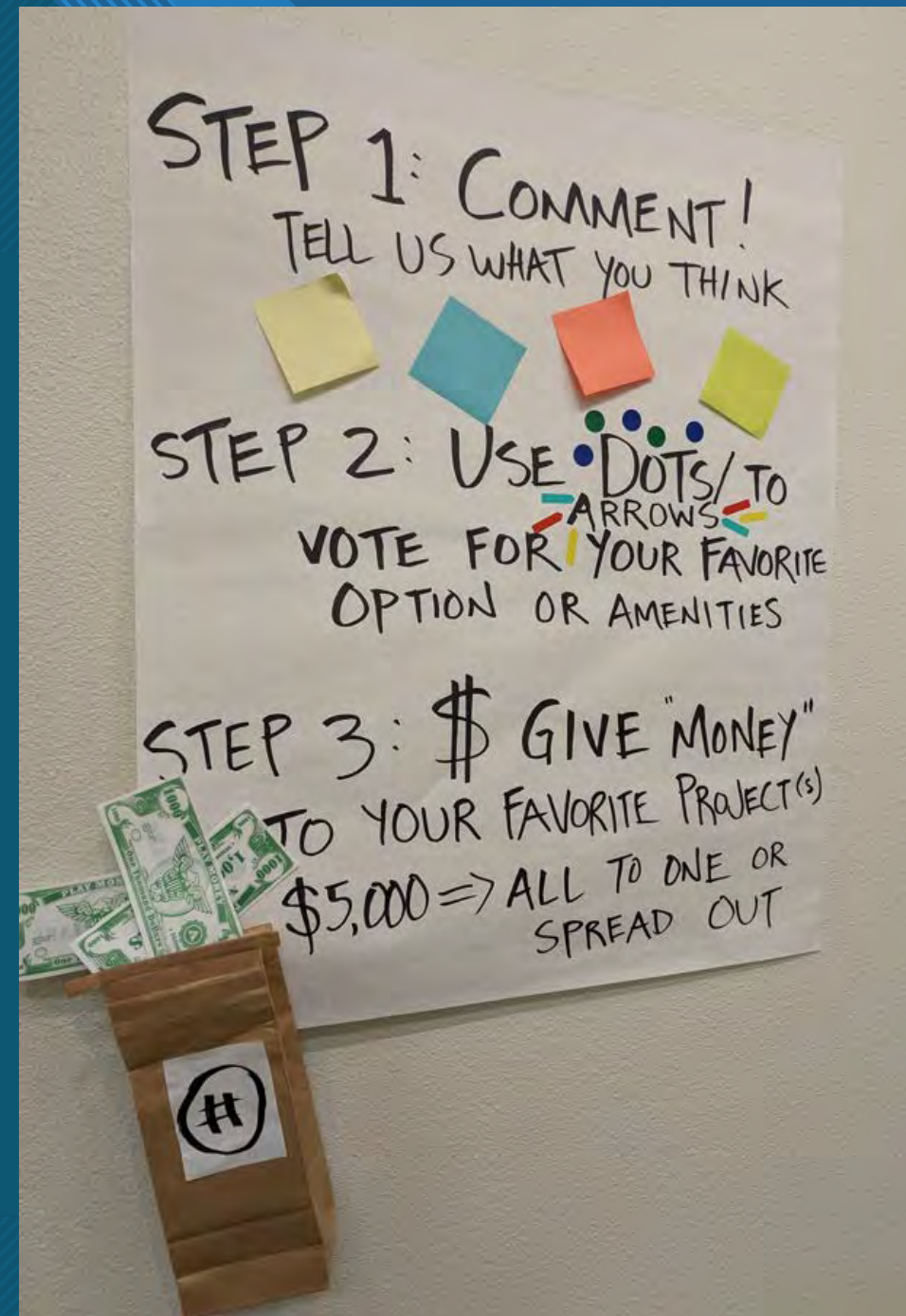
Breakout Activity (30 minutes)

➤ Dollar Exercise

- Each participant given \$\$ to dedicate to project(s)

➤ Slido Survey

- Scan the QR code or submit vote



slido

Please download and install the
Slido app on all computers you use



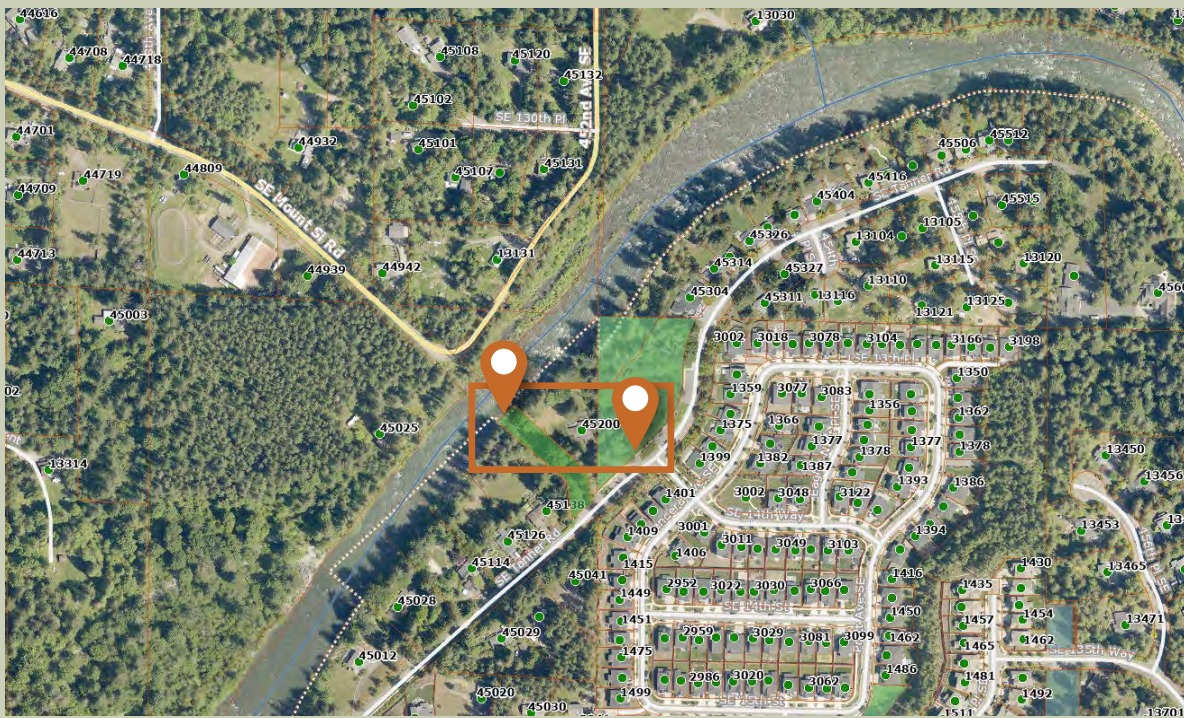
**Would you rather see the City prioritize
easement acquisition or recreational
facility improvements?**

① Start presenting to display the poll results on this slide.

Thanks for Listening!
Questions?

Project: Improvements at Tanner Road Shoreline Park

The concept sketches illustrate possible improvements to the existing parking area and informal access to the Middle Fork of the Snoqualmie River for hand-carry boat. A restroom and trash receptacle at the parking lot, and a safer natural stair down to the river, possibly including a boat slide or rail.



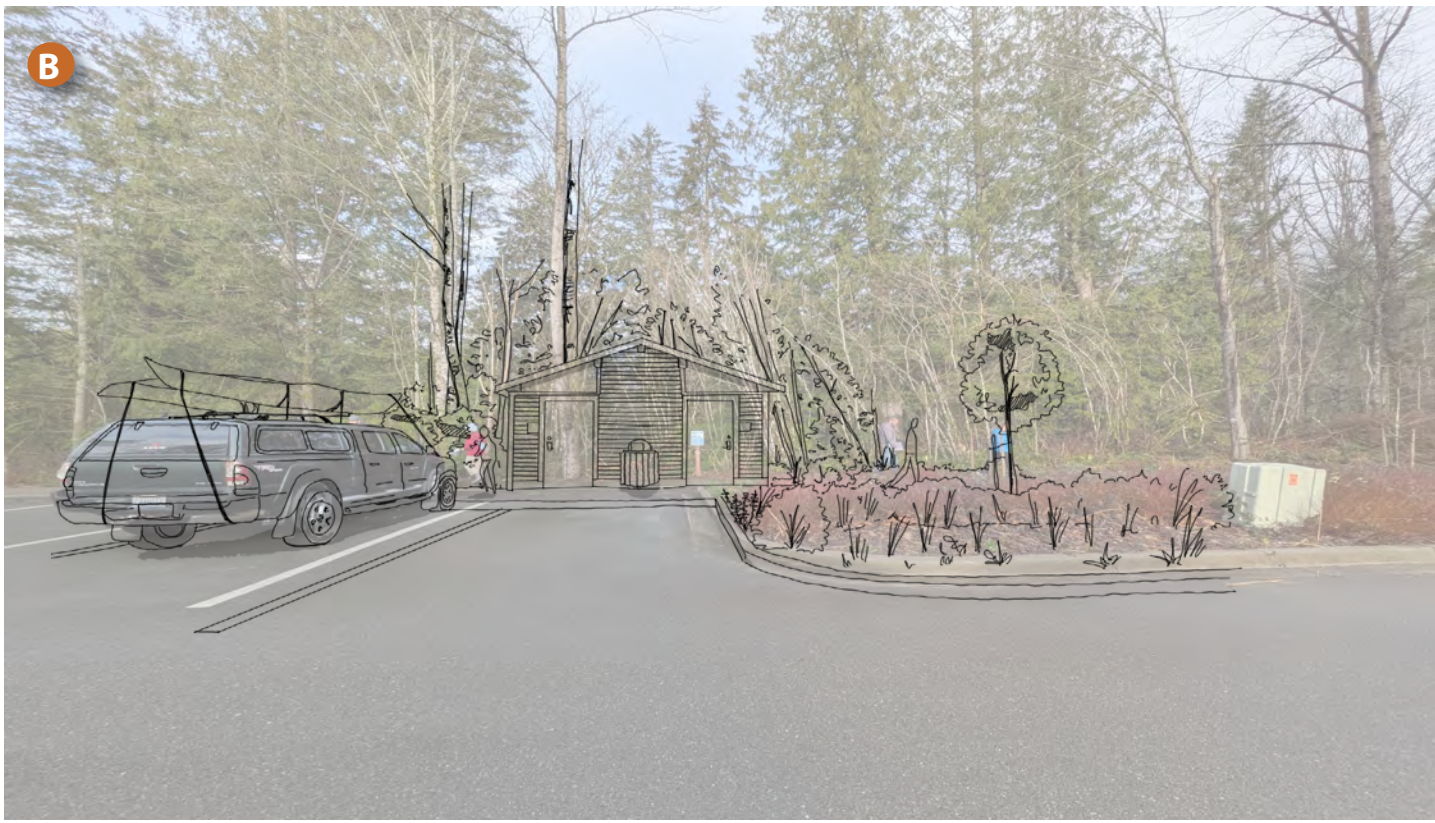
- Public land (shown in left map)
- 1 Staircase and boat rail
- 2 Existing gravel/mulch trail
- 3 Restroom
- 4 Native planting
- A Vignette view (boat launch stairs)
- B Vignette view (restroom)
- Bench
- Garbage can



Existing conditions of potential boat launch stairs



Existing conditions of potential restroom location



Precedent image of restroom



Precedent image of boat launch steps

Why Here?

- Publicly owned
- Located next to existing road
- Located next to existing parking area
- Existing shore is covered in natural boulders. Proposed condition would be to create safer stair down using same material type
- Gated access is managed by City

Amenities



Activities



How Are Impacts Minimized?

- Location already used as hand-carry boat launch
- No vegetation disturbance anticipated for stairs, minimal for bathroom
- Design could incorporate fencing/signage to separate access from forested areas
- Bathroom and garbage cans make waste management easier for park users

Project: River Access at Snoqualmie Valley Trail

The concept sketches illustrate a potential location for safe water access and amenities adjacent to the Snoqualmie Valley Trail. This concept draft proposes removing a portion of the levee, adding a restroom, and restoring native plants along the South Fork of the river.



- | | |
|---------------------------------------|----------------------|
| Public land (City of North Bend) | Utility pole |
| Public Land (King County) | Large woody material |
| Beach | Split rail fence |
| Gravel/mulch trail | Vignette view |
| Restroom | Bench |
| Native planting | Garbage can |
| Connection to Snoqualmie Valley Trail | |



Why Here?

- Publicly owned
- Avoids environmentally sensitive areas
- Located on impacted area (levee)
- Located close to existing trail and road
- Opportunity to shorten levee and improve habitat
- Proximity to city center
- Benefits/amenities shared with Snoqualmie Valley
- Trail users
- Potentially large work area to have a gentle slope and gravel beach

Amenities



Activities



How Are Impacts Minimized?

- Location is already impacted
- Design could incorporate fencing/signage to separate high intensity use from restoration areas
- Area is accessible for frequent management and maintenance

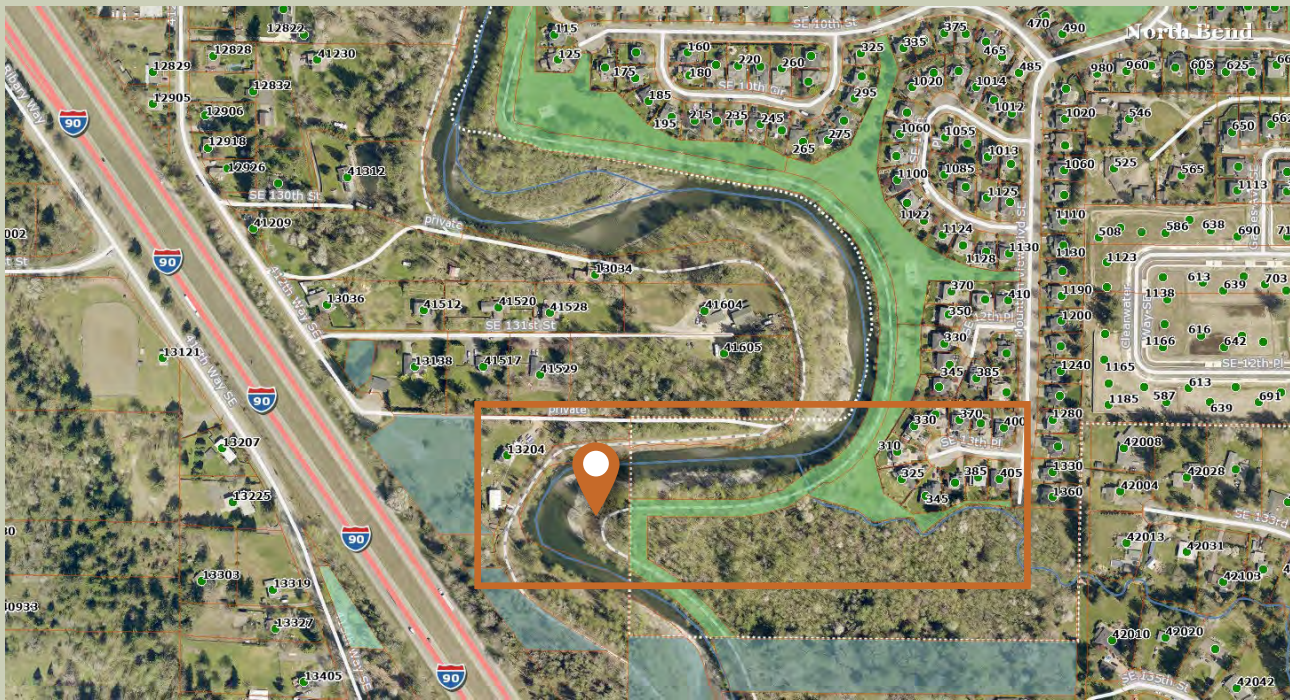


Existing conditions



Project: River Access at South Fork Walk-in Rest Area

The concept sketch illustrates a potential acquisition and development project location for safe water access and amenities adjacent to the existing levee trail. If possible with a willing seller, this concept draft proposes formalizing a walk-in only water access area, adding seasonally available amenities such as seating and trash receptacles, and restoring native plants along the South Fork of the river.



Precedent image of river access



Existing conditions

- Public land (City of North Bend)
- Public land (King County)
- 1 Beach
- 2 Existing gravel/mulch trail
- 3 Picnic tables
- 4 Native planting
- A Vignette view
 - Garbage can



Why Here?

- Adjacent to existing Public Trail segment
- Area is already used as a water access point
- Site already has a gentle slope and gravel areas clear of vegetation
- Site is a unique natural deposit area/inner-bend located waterward of the levee
- Environmental factors prevent development on this portion of a Private parcel

Amenities



Activities

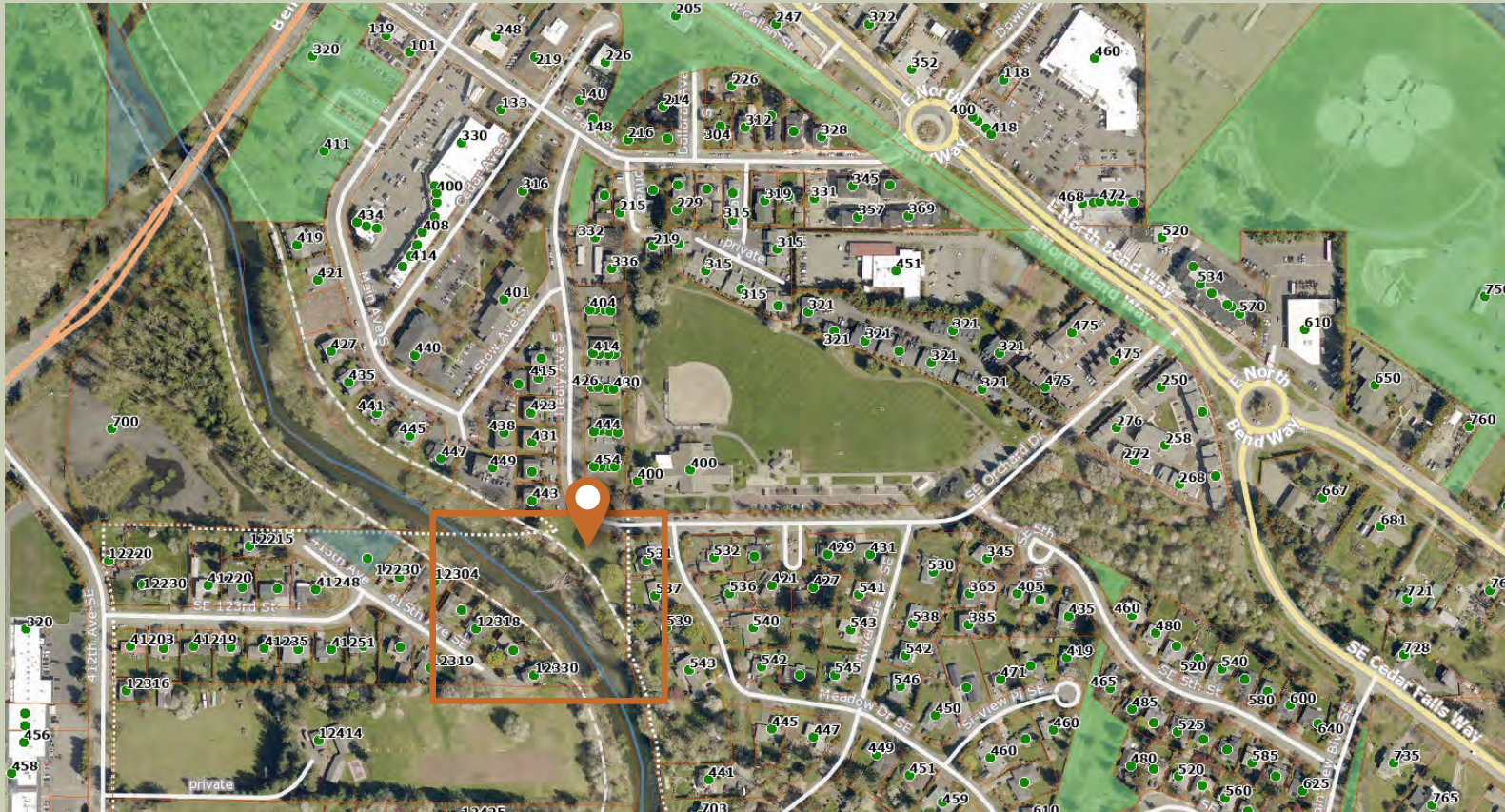


How Are Impacts Minimized?

- Location already used as water access area
- No vegetation disturbance anticipated
- Design could incorporate fencing/signage to separate access area from adjacent forested and private areas.
- Nearby informal paths between the trail and the water could be closed and restored
- Opportunities for invasive species removal

Project: River Access at Shamrock Park

The concept sketches illustrate a potential location for safe water access and amenities at Shamrock Park. This concept draft proposes installing a barrier-free sloped path down the face of the existing levee, including a hand-rail. Minor improvements above the levee include trash receptacles, clear connections to Si View Park and a possible future pedestrian bridge crossing that would continue to build non-motorized connections across the city.



- Public land (shown in top map)

1

Lawn to remain

2

Gravel/mulch trail

3

ADA ramp

4

Native planting

5

Pedestrian bridge

6

Staircase

A

Vignette view

-

Bench

•

Garbage can



Precedent image of stone staircase



Precedent image of pedestrian sloped path



Existing conditions



Why Here?

- Publicly owned
- Located next to existing road
- Located next to existing parking area
- Located next to existing park and amenities
- Proposed trail would impact waterward face of levee
- Proximity to city center
- Positive feedback from potential willing landowner on the other side of the river

Amenities



Activities



How Are Impacts Minimized?

- Trail proposed on area already impacted (levee)
- Trail placement would minimize vegetation disturbance and remove invasive plants
- Design could incorporate educational signage
- Area is accessible for frequent management and maintenance
- Trash receptacles can reduce littering

Project: River Access at Bendigo Blvd S Bridge

The concept illustrates a potential location for safe water access and river restoration adjacent to the Bendigo Blvd S Bridge on an existing portion of levee. This concept draft proposes creating a compact and well-maintained stair access area that could be associated with a future bridge replacement project. The concept focuses recreation impacts to one area while taking measures to protect and enhance the adjacent restoration associated with the future levee setback project.



- | | |
|--|---|
| ■ Public land (City of North Bend) | 4 Large woody material |
| ■ Public land (King County) | 5 Split rail fence |
| 1 Existing gravel/mulch trail | A Vignette view |
| 2 River access stairs | - Bench |
| 3 Native planting/restoration | • Garbage can |



Why Here?

- Publicly owned
- Avoids environmentally sensitive areas
- Located on impacted area (levee)
- Located close to existing trail and road
- Opportunity to shorten levee and improve habitat
- Proximity to city center
- Benefits/amenities shared with Snoqualmie Valley
- Trail users
- Potentially large work area to have a gentle slope and gravel beach

Amenities



Activities



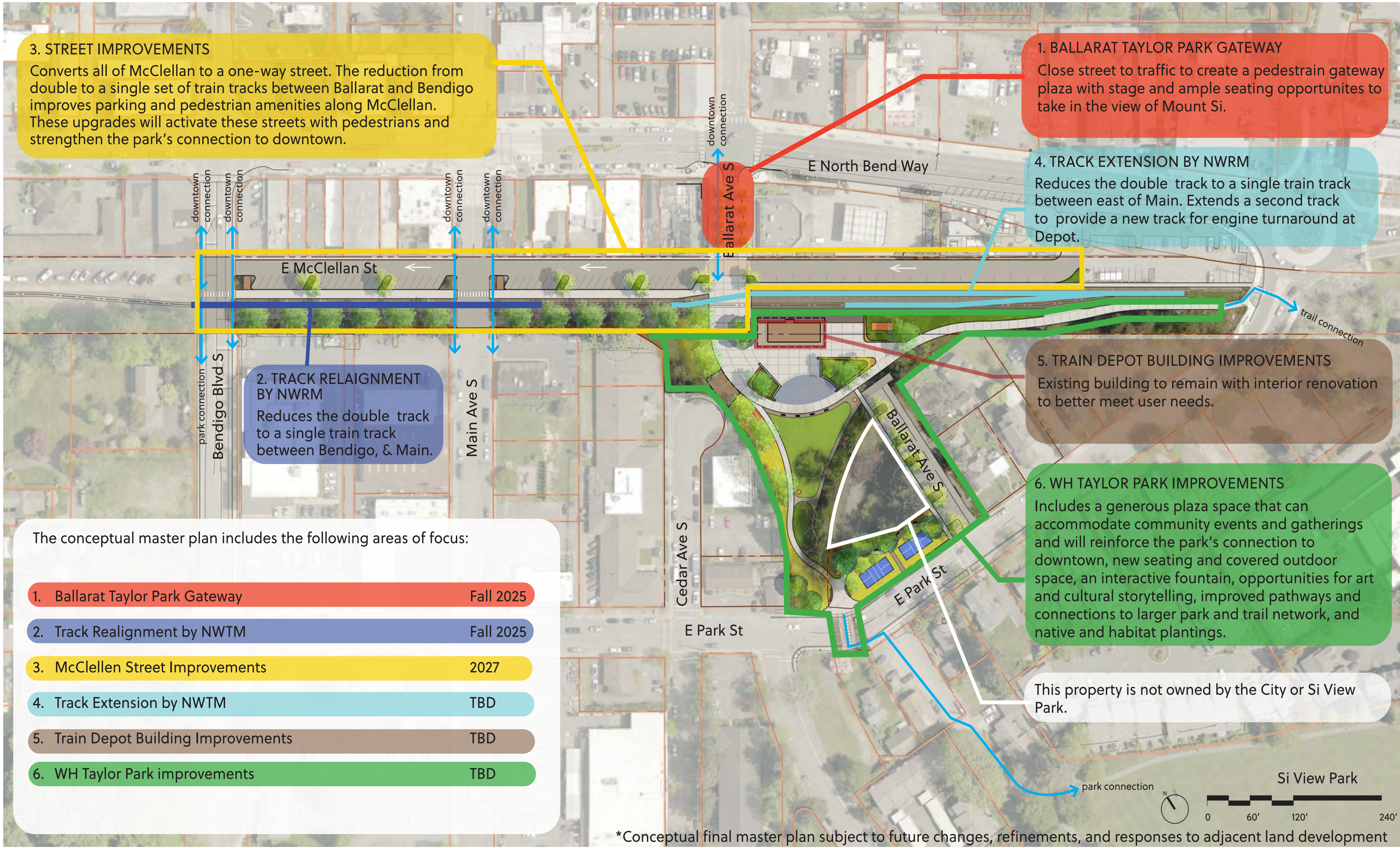
How Are Impacts Minimized?

- Location is already impacted
- Design could incorporate fencing/signage to separate high intensity use from restoration areas
- Area is accessible for frequent management and maintenance

WORKSHOP 2 MATERIALS:

BALLARAT AVENUE PLAZA

Summary of Projects in Downtown North Bend

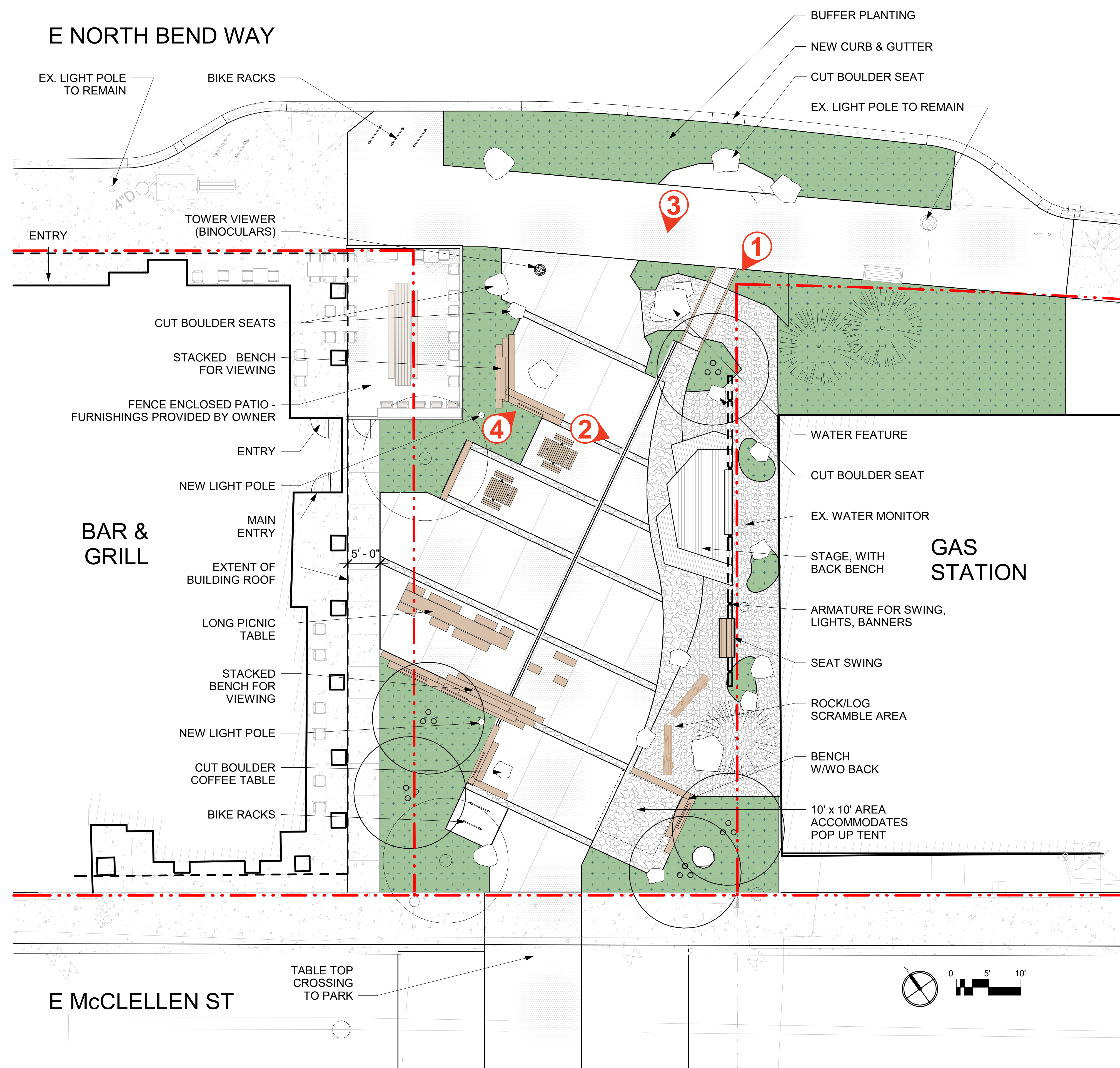


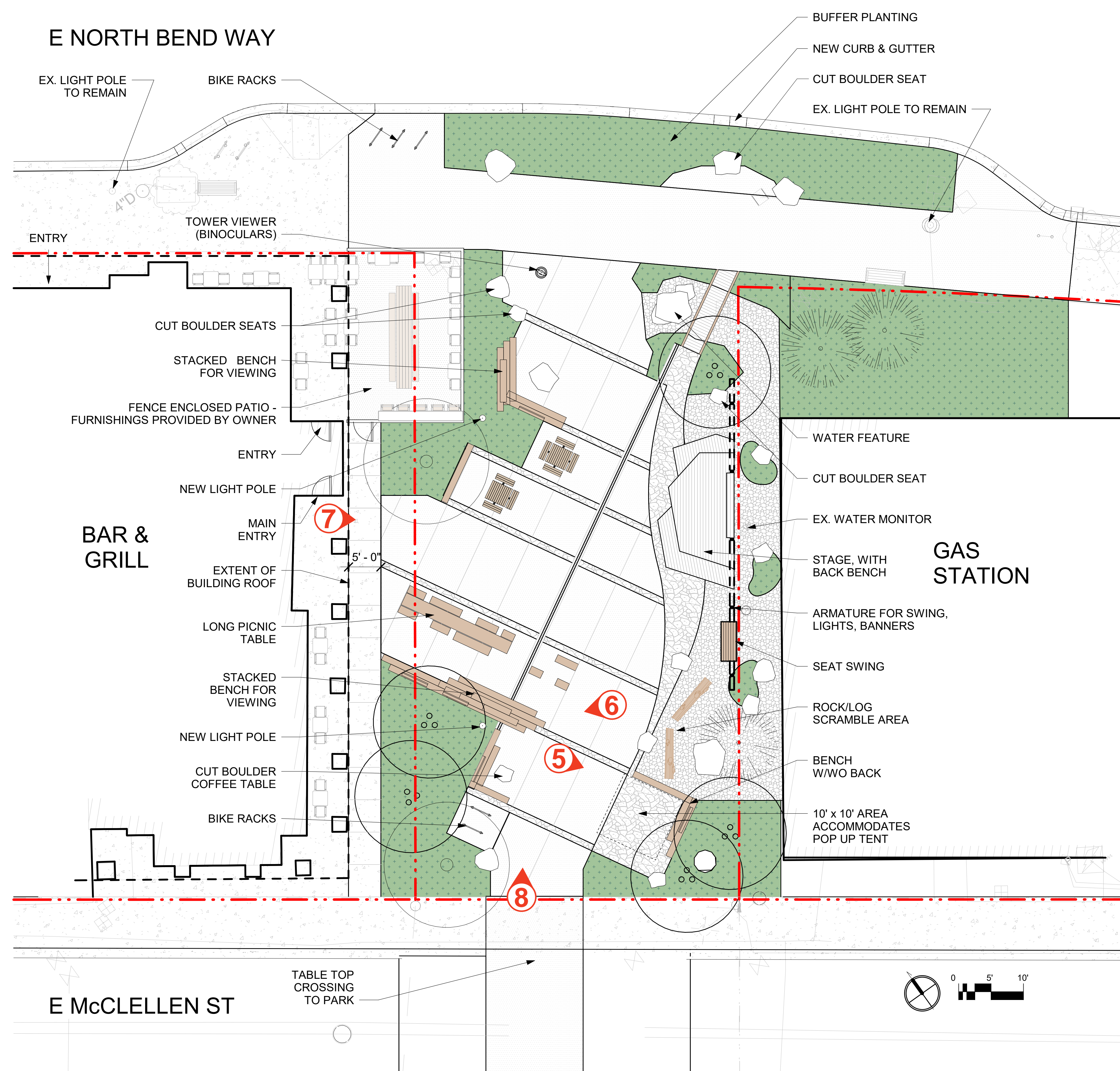
Existing Conditions Site Plan



Site Images









Minutes of the North Bend Parks Commission Meeting of Jan. 22, 2025

Minutes are draft until approved at the following Parks Commission Meeting

The meeting was an in-person meeting at North Bend City Hall and was called to order at 6:34 p.m.

Attendance:

- Parks Commissioners in attendance: Brian Duncan, Matt Miller, Minna Rudd and Tim Talevich. Ethan Eusebio attended via video. Absent: Eric Thompson and Kyle Braun.
- Staff in attendance: Mike McCarty and Caitlin Hepworth

Minutes of the November 21, 2024 Parks Commission Meeting

A correction was requested for the minutes, changing “Commission President Rudd” to “Commission Chair Rudd.” Commissioner Duncan made a motion to approve the minutes with the amendment; Commissioner Miller seconded. The motion passed unanimously.

Selection of the chair and vice chair for 2025

Commissioners discussed time availability and individual aspirations for the commission leadership positions. Current Chair Rudd expressed a willingness to continue with the chair position. Given the absences of commissioners Braun and Thompson to participate in discussions about vice chair, it was agreed to reexamine the matter when they are in attendance. Commissioner Duncan made a motion to approve Chair Rudd for another term, and select the vice chair later. Commissioner Miller seconded. The motion passed unanimously.

Scoping for Bicycle Mobility Plan

The city of North Bend is formulating a Bicycle Mobility Plan, and Parks Commission input will be part of the process. Associate Planner Hepworth gave an overview of the scope of the project, explaining the Plan will ultimately be a guide that encompasses existing bike policies and goals into a cohesive document. Creating the plan will require looking at existing bike lanes and paths, identifying missing links, gauging public interest, and more. Hepworth led commissioners on a series of exercises to gauge key points to address and start on a vision for a robust bike system in the city, linking to surrounding areas. An informal commission “vision board” about the bike plan listed things such as safety, connections to other trails, connections to local businesses, accessibility for all users, and more.

Review and comment for Bendigo Boulevard Multi-use Trail and Bridge

Plans are being drafted for the SR-202 shared-use trail extension across the South Fork Snoqualmie River. The project provides screening for the Wastewater Treatment Plant with a new curb and gutter, sidewalk, and landscaping from West 4th Street to the SR-202 bridge. Work also includes installation of a pedestrian bridge over the South Fork of the Snoqualmie River adjacent to SR-202 bridge. The bridge lacks an appropriate sidewalk. The new pedestrian bridge will also function as a utility (sewer pipe) carrier.

Commissioners made several comments, including these:

- Can the trail near the sewage treatment plant extend to the sidewalk on 4th Street.
- Can the new trail connect with the trail and boardwalk under SR-202 bridge.
- Is access to existing water spigots being used by farmers retained.
- Can the new bridge include a “pullout” or “bump-out” in the middle to allow people to stop and view the river, as few such amenities are available in our area.

Miscellaneous Updates

Commission members discussed updates on several topics, including:

- Downtown garbage and recycling cans. The images have been delivered to the product company, and the containers are expected to arrive in February.
- Commissioner Talevich reported that he attended the online meeting for the Snoqualmie Valley Outdoor Recreation Action Team.
- A question was raised whether trees in the median on North Bend Way near the crosswalk in front of the Phoenix Building might block visibility for pedestrians as drivers approach from the west near QFC heading east.
- The swings at Torguson Park are pretty high off the ground now, as the wood chips are worn down.

Adjournment

The meeting was adjourned at 8:27 p.m.

Minutes prepared by Tim Talevich